



ELECTRONIC COPY

LABORATORY GROWN DIAMOND REPORT

March 18, 2025	
IGI Report Number	LG691552835
Description	LABORATORY GROWN DIAMOND
Shape and Cutting Style	CUT CORNERED RECTANGULAR MODIFIED BRILLIANT
Measurements	7.98 X 5.67 X 4.01 MM

GRADING RESULTS

Carat Weight	1.50 CARAT
Color Grade	E
Clarity Grade	VVS 2

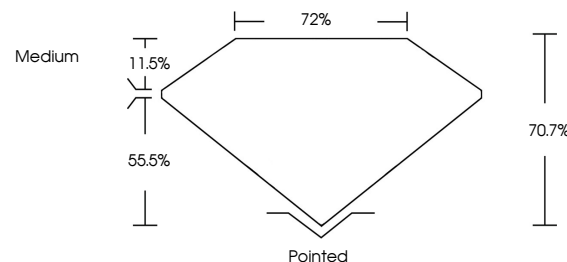
ADDITIONAL GRADING INFORMATION

Polish	EXCELLENT
Symmetry	EXCELLENT
Fluorescence	NONE
Inscription(s)	 LG691552835

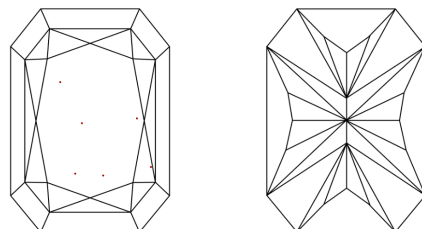
Comments: This Laboratory Grown Diamond was created by Chemical Vapor Deposition (CVD) growth process.
Type IIa

LG691552835
Report verification at lgi.org

PROPORTIONS

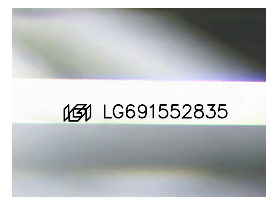


CLARITY CHARACTERISTICS



KEY TO SYMBOLS

Red symbols indicate internal characteristics.
Green symbols indicate external characteristics.



Sample Image Used

COLOR

D E F G H I J Faint Very Light Light

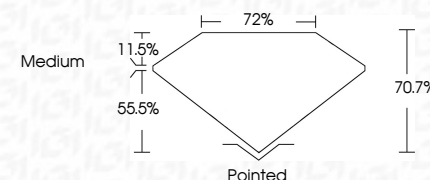
CLARITY

IF	VS ¹⁻²	VS ¹⁻²	SI ¹⁻²	I ¹⁻³
Internally Flawless	Very Very Slightly Included	Very Slightly Included	Slightly Included	Included

LABORATORY GROWN DIAMOND REPORT



March 18, 2025	
IGI Report Number	LG691552835
Description	LABORATORY GROWN DIAMOND
Shape and Cutting Style	CUT CORNERED RECTANGULAR MODIFIED BRILLIANT
Measurements	7.98 X 5.67 X 4.01 MM
GRADING RESULTS	
Carat Weight	1.50 CARAT
Color Grade	E
Clarity Grade	VVS 2



ADDITIONAL GRADING INFORMATION

Polish	EXCELLENT
Symmetry	EXCELLENT
Fluorescence	NONE
Inscription(s)	 LG691552835
<p>Comments: This Laboratory Grown Diamond was created by Chemical Vapor Deposition (CVD) growth process.</p> <p>Type IIa</p>	



www.igi.org

© IGI 2020, International Gemological Institute

FD - 10 20



THIS DOCUMENT WAS PRODUCED WITH THE FOLLOWING SECURITY MEASURES: SPECIAL DOCUMENT PAPER, INK SCREENS, WATERMARK, BACKGROUND DESIGNS, HOLOGRAM AND OTHER SECURITY FEATURES NOT LISTED AND DO EXCEED DOCUMENT SECURITY INDUSTRY GUIDELINES

March 18, 2025	1.50 CARAT	1.50 CARAT	VS 2	Polished	EXCELLENT	NONE	Serial G601592835
Report No LG491562835	Color Grade	Clarity Grade	Depth	Culet	Fluorescence	Measurements (mm)	
CU CORNERED RECT. MODIFIED BRILLIANT	Carat Weight	Table	70.7%	Polish	Symmetry		
	9.98 X 5.67 X 4.01 MM	Girdle	72%				

Comments:
This Laboratory Grown Diamond was created by Chemical Vapor Deposition (CVD) growth process.