

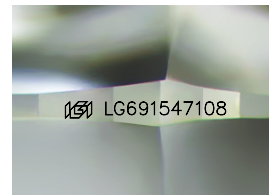
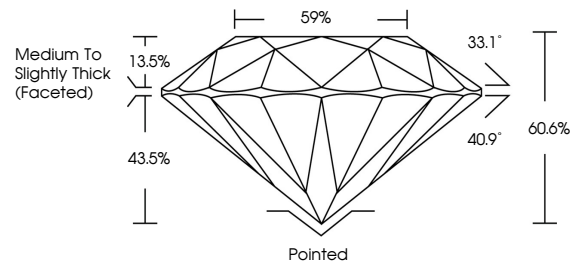


**INTERNATIONAL
GEMOLOGICAL
INSTITUTE**

ELECTRONIC COPY

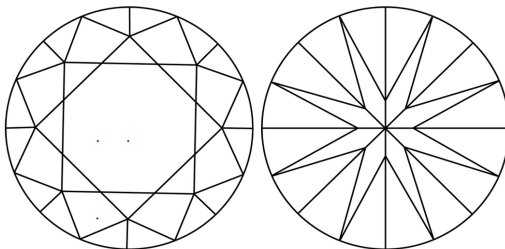
LG691547108
Report verification at igig.org

PROPORTIONS



Sample Image Used

CLARITY CHARACTERISTICS



KEY TO SYMBOLS

Red symbols indicate internal characteristics.
Green symbols indicate external characteristics.

COLOR

D E F G H I J Faint Very Light Light

CLARITY

IF WS¹⁻² VS¹⁻² SI¹⁻² |¹⁻³

Internally Flawless	Very Very Slightly Included	Very Slightly Included	Slightly Included	Included
------------------------	--------------------------------	---------------------------	----------------------	----------



March 13, 2025

IGI Report Number **LG691547108**

Description	LABORATORY GROWN DIAMOND
-------------	--------------------------

Shape and Cutting Style **ROUND BRILLIANT**

Measurements 11.07 - 11.13 X 6.72 MM

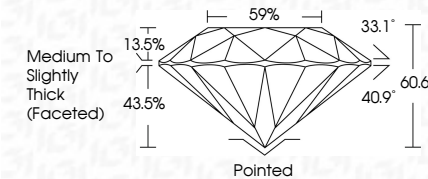
GRADING RESULTS

Carat Weight **5.07 CARATS**

Color Grade	E
-------------	---

Clarity Grade VVS 2

Cut Grade **IDEAL**



ADDITIONAL GRADING INFORMATION

Polish **EXCELLENT**Symmetry **EXCELLENT**Fluorescence **NONE**Inscription(s) LG691547100

Comments: This Laboratory Grown Diamond was created by Chemical Vapor Deposition (CVD) growth process.
Type IIa



IG



© IGI 2020, International Gemological Institute

FD - 10 20

www.igi.org

THIS DOCUMENT WAS PRODUCED WITH THE FOLLOWING SECURITY MEASURES: SPECIAL DOCUMENT PAPER, INK SCREENS, WATERMARK, PHOTOGRAPHIC DESIGN, HOLE PUNCH, AND OTHER SECURITY FEATURES NOT LISTED. AND DO NOT DISCLOSE TO ANY OTHER PERSONS OR ORGANIZATIONS.

March 13, 2025	GI Report No. LG591547108	ROUND BRILLIANT	11.07 - 11.13 X 6.72 MM	5.07 CARATS	E	VVS 2	60.0%	59%	Medium to Slightly Thick Faceted	Pointed	EXCELLENT	EXCELLENT	NONE	691 LG591547108	Comments: This Laboratory Grown Diamond was created by Chemical Vapor Deposition (CVD) growth process. Type IIa
		Color Grade	Clarity Grade	Cut Grade	Table	Girdle	Culet	Polish	Symmetry	Fluorescence	Inscription(s)				