

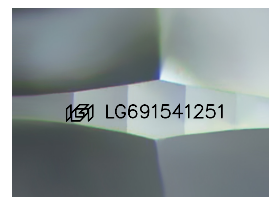
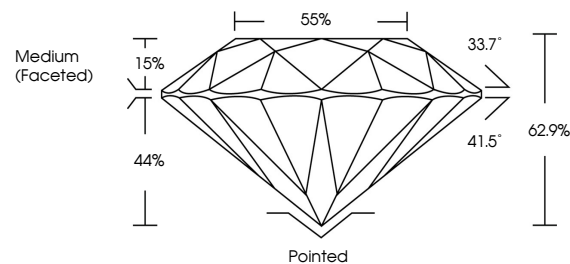


ELECTRONIC COPY

LABORATORY GROWN DIAMOND REPORT

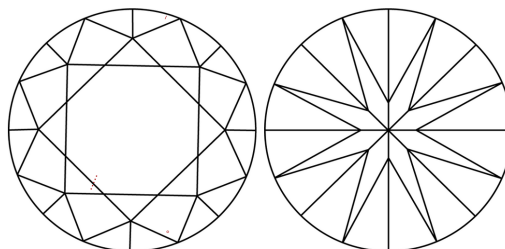
LG691541251
Report verification at igi.org

PROPORTIONS



Sample Image Used

CLARITY CHARACTERISTICS



KEY TO SYMBOLS

Red symbols indicate internal characteristics.
Green symbols indicate external characteristics.

COLOR

D E F G H I J Faint Very Light Light

CLARITY

IF WS¹⁻² VS¹⁻² SI¹⁻² |¹⁻³

Internally Flawless	Very Very Slightly Included	Very Slightly Included	Slightly Included	Included
------------------------	--------------------------------	---------------------------	----------------------	----------



March 15, 2025

IGI Report Number **LG691541251**Description **LABORATORY GROWN DIAMOND**Shape and Cutting Style **ROUND BRILLIANT**

Measurements 7.24 - 7.28 X 4.56 MM

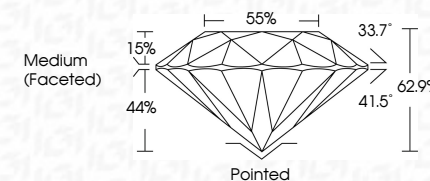
GRADING RESULTS

Carat Weight 1.46 CARAT

Color Grade

Clarity Grade VS 1

Cut Grade **EXCELLENT**



ADDITIONAL GRADING INFORMATION

Polish **EXCELLENT**Symmetry **EXCELLENT**Fluorescence **NONE**Inscription(s) LG691541251

Comments: This Laboratory Grown Diamond was created by Chemical Vapor Deposition (CVD) growth process.
Type IIa



© IGI 2020, International Gemological Institute

FD - 10 20

www.igi.org

THIS DOCUMENT WAS PRODUCED WITH THE FOLLOWING SECURITY MEASURES: SPECIAL DOCUMENT PAPER, INK SCREENS, WATERMARK BACKGROUND DESIGNS, HOLOGRAM AND OTHER SECURITY FEATURES NOT LISTED AND DO EXCEED DOCUMENT SECURITY INDUSTRY GUIDELINES

March 15, 2026	Carat Weight	1.46 CARAT
GJ Report No LG971641251	Color Grade	E
ROUND BRILLIANT	Cut Grade	VS 1
24 - 7.28 X 4.56 MM	Clarity Grade	EXCELLENT
	Depth	62.9%
	Table	55%
	Girdle	Medium (Faceted)
	Culet	Poined
	Polish	EXCELLENT
	Symmetry	EXCELLENT
	Fluorescence	NONE
	Inscription(s)	NGJ LG971641251
Comments:		
The Laboratory Grown Diamond was created by Chemical Vapor Deposition (CVD) growth process.		
Type IIA		