



**ELECTRONIC COPY**

LG691509266  
Report verification at igi.org



March 25, 2025

IGI Report Number **LG691509266**

Description **LABORATORY GROWN DIAMOND**

Shape and Cutting Style **OLD EUROPEAN CUT**

Measurements **9.49 - 9.51 X 5.78 MM**

**GRADING RESULTS**

Carat Weight **3.52 CARATS**

Color Grade **FANCY VIVID BLUE**

Clarity Grade **VS 2**

March 25, 2025

IGI Report Number **LG691509266**

Description **LABORATORY GROWN DIAMOND**

Shape and Cutting Style **OLD EUROPEAN CUT**

Measurements **9.49 - 9.51 X 5.78 MM**

**GRADING RESULTS**

Carat Weight **3.52 CARATS**

Color Grade **FANCY VIVID BLUE**

Clarity Grade **VS 2**

**ADDITIONAL GRADING INFORMATION**

Polish **EXCELLENT**

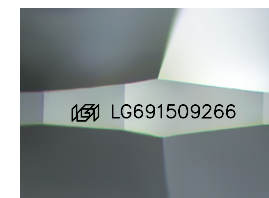
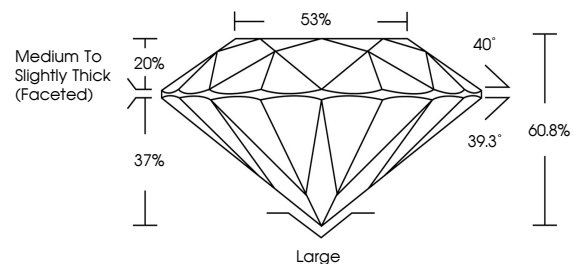
Symmetry **EXCELLENT**

Fluorescence **NONE**

Inscription(s) **IGI LG691509266**

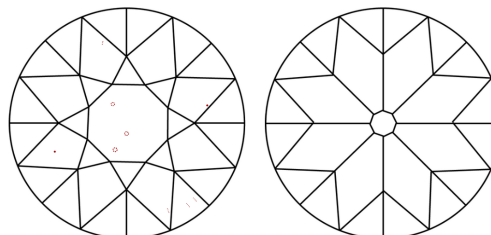
Comments: This Laboratory Grown Diamond was created by Chemical Vapor Deposition (CVD) growth process. Indications of post-growth treatment.

**PROPORTIONS**



Sample Image Used

**CLARITY CHARACTERISTICS**



**KEY TO SYMBOLS**

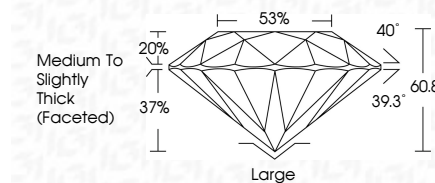
Red symbols indicate internal characteristics.  
Green symbols indicate external characteristics.

**COLOR**

D E F G H I J Faint Very Light Light

**CLARITY**

IF	VS <sup>1-2</sup>	VS <sup>1-2</sup>	SI <sup>1-2</sup>	I <sup>1-3</sup>
Internally Flawless	Very Very Slightly Included	Very Slightly Included	Slightly Included	Included



**ADDITIONAL GRADING INFORMATION**

Polish **EXCELLENT**

Symmetry **EXCELLENT**

Fluorescence **NONE**

Inscription(s) **IGI LG691509266**

Comments: This Laboratory Grown Diamond was created by Chemical Vapor Deposition (CVD) growth process. Indications of post-growth treatment.



**IGI**



March 25, 2025	IGI Report No LG691509266	3.52 CARATS	FANCY VIVID BLUE	VS 2	60.8%	85%	Medium to Slightly Thick (Faceted)	Large	EXCELLENT	EXCELLENT	NONE	IGI LG691509266
IGI Report No LG691509266	9.49 - 9.51 X 5.78 MM	Carat Weight	Color Grade	Clarity Grade	Table	Girdle	Culet	Polish	Symmetry	Fluorescence	Inscription(s)	

Comments: This Laboratory Grown Diamond was created by Chemical Vapor Deposition (CVD) growth process. Indications of post-growth treatment.