



**ELECTRONIC COPY**

LG691507300  
Report verification at igi.org



March 12, 2025  
IGI Report Number **LG691507300**  
Description **LABORATORY GROWN DIAMOND**  
Shape and Cutting Style **EMERALD CUT**  
Measurements **7.80 X 5.18 X 3.52 MM**  
**GRADING RESULTS**  
Carat Weight **1.46 CARAT**  
Color Grade **D**  
Clarity Grade **INTERNALLY FLAWLESS**

March 12, 2025  
IGI Report Number **LG691507300**  
Description **LABORATORY GROWN DIAMOND**  
Shape and Cutting Style **EMERALD CUT**  
Measurements **7.80 X 5.18 X 3.52 MM**

**GRADING RESULTS**

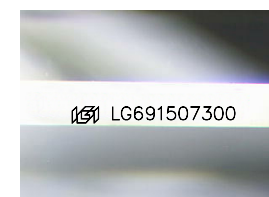
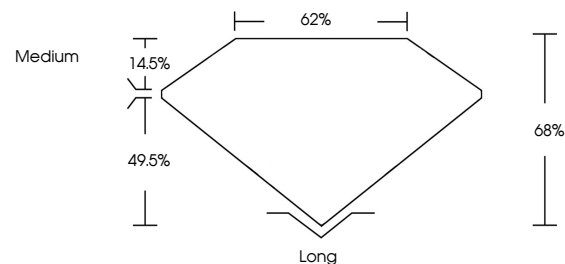
Carat Weight **1.46 CARAT**  
Color Grade **D**  
Clarity Grade **INTERNALLY FLAWLESS**

**ADDITIONAL GRADING INFORMATION**

Polish **EXCELLENT**  
Symmetry **EXCELLENT**  
Fluorescence **NONE**  
Inscription(s) **LG691507300**

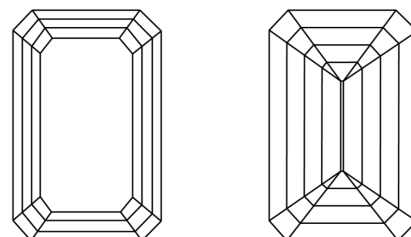
Comments: As Grown - No indication of post-growth treatment.  
This Laboratory Grown Diamond was created by High Pressure High Temperature (HPHT) growth process.  
Type II

**PROPORTIONS**



Sample Image Used

**CLARITY CHARACTERISTICS**



**KEY TO SYMBOLS**

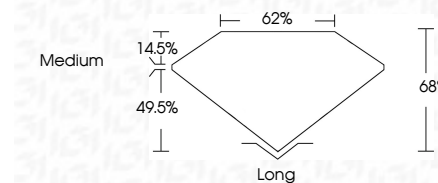
Red symbols indicate internal characteristics.  
Green symbols indicate external characteristics.

**COLOR**

D E F G H I J Faint Very Light Light

**CLARITY**

IF	VS <sup>1-2</sup>	VS <sup>1-2</sup>	SI <sup>1-2</sup>	I <sup>1-3</sup>
Internally Flawless	Very Very Slightly Included	Very Slightly Included	Slightly Included	Included



**ADDITIONAL GRADING INFORMATION**

Polish **EXCELLENT**  
Symmetry **EXCELLENT**  
Fluorescence **NONE**  
Inscription(s) **LG691507300**  
Comments: As Grown - No indication of post-growth treatment.  
This Laboratory Grown Diamond was created by High Pressure High Temperature (HPHT) growth process.  
Type II



**IGI**



March 12, 2025  
IGI Report No **LG691507300**  
**EMERALD CUT**  
Carat Weight **1.46 CARAT**  
Color Grade **D**  
Clarity Grade **IF**  
Depth **49.5%**  
Table **14.5%**  
Girdle **Medium**  
Culet **Long**  
Polish **EXCELLENT**  
Symmetry **EXCELLENT**  
Fluorescence **NONE**  
Inscription(s) **LG691507300**

Comments: As Grown - No indication of post-growth treatment.  
This Laboratory Grown Diamond was created by High Pressure High Temperature (HPHT) growth process.  
Type II