



ELECTRONIC COPY

LABORATORY GROWN DIAMOND REPORT

March 15, 2025	
IGI Report Number	LG690526903
Description	LABORATORY GROWN DIAMOND
Shape and Cutting Style	CUT CORNERED RECTANGULAR MODIFIED BRILLIANT
Measurements	12.14 X 8.38 X 5.66 MM

GRADING RESULTS

Carat Weight	5.08 CARATS
Color Grade	E
Clarity Grade	VS 1

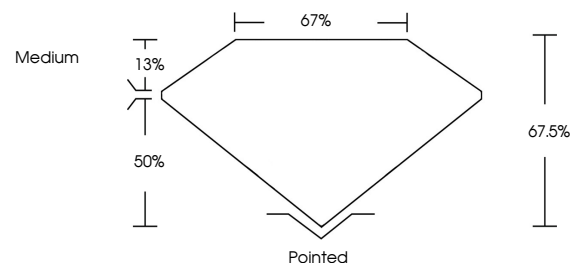
ADDITIONAL GRADING INFORMATION

Polish	EXCELLENT
Symmetry	EXCELLENT
Fluorescence	NONE
Inscription(s)	 LG690526903

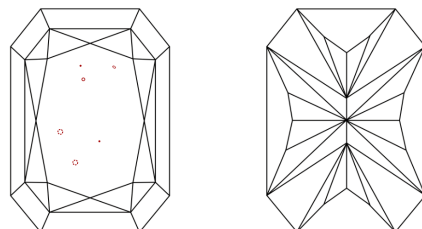
Comments: This Laboratory Grown Diamond was created by Chemical Vapor Deposition (CVD) growth process.
Type IIa

LG690526903
Report verification at igi.org

PROPORTIONS

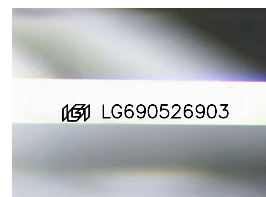


CLARITY CHARACTERISTICS



KEY TO SYMBOLS

Red symbols indicate internal characteristics.
Green symbols indicate external characteristics.



Sample Image Used

COLOR

D E F G H I J Faint Very Light Light

CLARITY

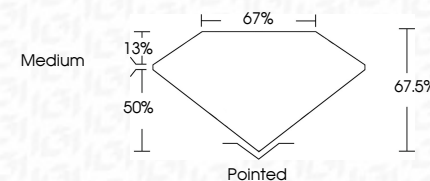
IF VWS¹⁻² VS¹⁻² SI¹⁻² I¹⁻³

Internally Flawless	Very Very Slightly Included	Very Slightly Included	Slightly Included	Included
---------------------	-----------------------------	------------------------	-------------------	----------

LABORATORY GROWN DIAMOND REPORT



March 15, 2025	
IGI Report Number	LG690526903
Description	LABORATORY GROWN DIAMOND
Shape and Cutting Style	CUT CORNERED RECTANGULAR MODIFIED BRILLIANT
Measurements	12.14 X 8.38 X 5.66 MM
GRADING RESULTS	
Carat Weight	5.08 CARATS
Color Grade	E
Clarity Grade	VS 1



ADDITIONAL GRADING INFORMATION

Polish	EXCELLENT
Symmetry	EXCELLENT
Fluorescence	NONE
Inscription(s)	 LG690526903
<p>Comments: This Laboratory Grown Diamond was created by Chemical Vapor Deposition (CVD) growth process.</p> <p>Type IIa</p>	



© IGI 2020, International Gemological Institute

FD - 10 20

www.igi.org

THIS DOCUMENT WAS PRODUCED WITH THE FOLLOWING SECURITY MEASURES: SPECIAL DOCUMENT PAPER, INK SCREENS, WATERMARK, BACKGROUND DESIGNS, HOLOGRAM AND OTHER SECURITY FEATURES NOT LISTED AND DO EXCEED DOCUMENT SECURITY INDUSTRY GUIDELINE

March 15, 2026	GJ Report No LG90529903	Pinkish EXCELLENT
CUT CORNERED BEC7, MODIFIED BRILLIANT	VS 1	Pinkish EXCELLENT
112.14 X 8.33 X 5.66 MM	67.5%	NONE
Color Weight	67%	#GJ LG90529903
Color Grade	Medium	
Clarity Grade	Excellent	
Table	Symmetry	
Girdle	Fluorescence	
	Description(s)	
	Culet	
	Booth	
	Comments:	
	The Laboratory Grown Diamond was created by Chemical Vapor Deposition (CVD) growth process.	
	Type IIa	