



ELECTRONIC COPY

LABORATORY GROWN DIAMOND REPORT

March 25, 2025	
IGI Report Number	LG690513563
Description	LABORATORY GROWN DIAMOND
Shape and Cutting Style	ROUND BRILLIANT
Measurements	8.66 - 8.71 X 5.40 MM

GRADING RESULTS

Carat Weight	2.50 CARATS
Color Grade	FANCY VIVID PINK
Clarity Grade	VS 2
Cut Grade	IDEAL

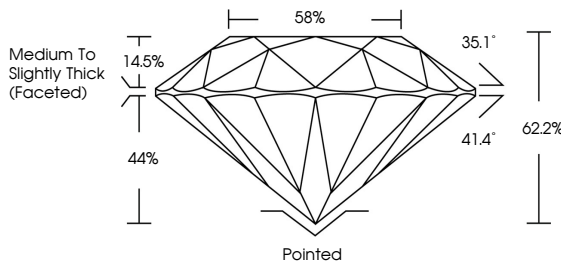
ADDITIONAL GRADING INFORMATION

Polish	EXCELLENT
Symmetry	EXCELLENT
Fluorescence	SLIGHT
Inscription(s)	 LG690513563

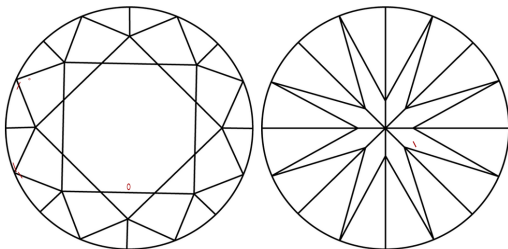
Comments: This Laboratory Grown Diamond was created by Chemical Vapor Deposition (CVD) growth process.
Indications of post-growth treatment.

LG690513563
Report verification at igi.org

PROPORTIONS

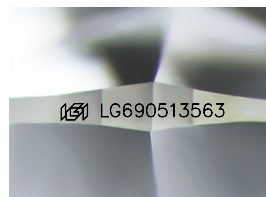


CLARITY CHARACTERISTICS



KEY TO SYMBOLS

Red symbols indicate internal characteristics.
Green symbols indicate external characteristics.



Sample Image Used

COLOR

D E F G H I J Faint Very Light Light

CLARITY

IF WS¹⁻² VS¹⁻² SI¹⁻² I¹⁻³

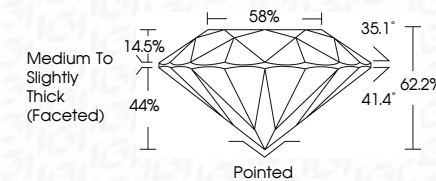
Internally Flawless	Very Very Slightly Included	Very Slightly Included	Slightly Included	Included
------------------------	--------------------------------	---------------------------	----------------------	----------



March 25, 2025	
IGI Report Number	LG690513563
Description	LABORATORY GROWN DIAMOND
Shape and Cutting Style	ROUND BRILLIANT
Measurements	8.66 - 8.71 X 5.40 MM

GRADING RESULTS

Carat Weight	2.50 CARATS
Color Grade	FANCY VIVID PINK
Clarity Grade	VS 2
Cut Grade	IDEAL



ADDITIONAL GRADING INFORMATION

Polish	EXCELLENT
Symmetry	EXCELLENT
Fluorescence	SLIGHT
Inscription(s)	 LG690513563
<p>Comments: This Laboratory Grown Diamond was created by Chemical Vapor Deposition (CVD) growth process.</p> <p>Indications of post-growth treatment.</p>	



IG



© IGI 2020, International Gemological Institute

FD - 10 20

www.igi.org



THIS DOCUMENT WAS PRODUCED WITH THE FOLLOWING SECURITY MEASURES: SPECIAL DOCUMENT PAPER, INK SCREENS, WATERMARK, BACKGROUND DESIGNS, HOLOGRAM AND OTHER SECURITY FEATURES NOT LISTED AND DO EXCEED DOCUMENT SECURITY INDUSTRY GUIDELINE

March 25, 2025
IGI Report No LG690513563
ROUND BRILLIANT

6.86 - 8.71 X 5.40 MM	
Carat Weight	2.50 CARATS
Color Grade	FANCY VIVID PINK
Clarity Grade	VS 2
Cut Grade	IDEAL
Depth	62.2%
Table	56%
Girdle	Medium to slightly Thick (faceted)
Culet	Pointed
Polish	EXCELLENT
Symmetry	EXCELLENT
Fluorescence	SLIGHT

Comments:
This Laboratory Grown Diamond was created by Chemical Vapor Deposition (CVD) growth process.