

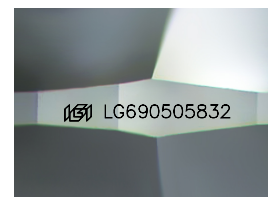
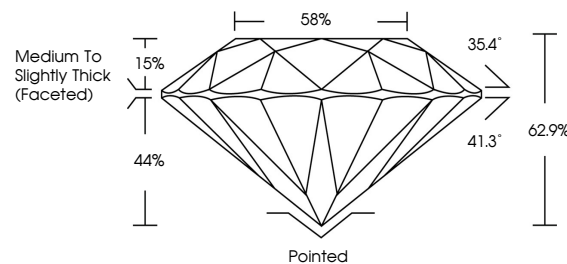


ELECTRONIC COPY

LABORATORY GROWN DIAMOND REPORT

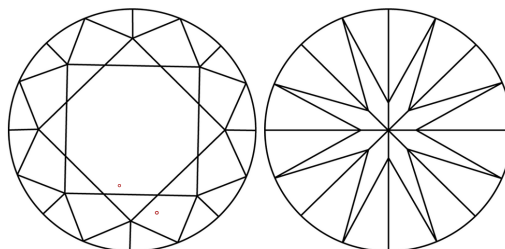
LG690505832
Report verification at igi.org

PROPORTIONS



Sample Image Used

CLARITY CHARACTERISTICS



KEY TO SYMBOLS

Red symbols indicate internal characteristics.
Green symbols indicate external characteristics.

COLOR

D E F G H I J Faint Very Light Light

CLARITY

IF WS¹⁻² VS¹⁻² SI¹⁻² |¹⁻³

Internally Flawless	Very Very Slightly Included	Very Slightly Included	Slightly Included	Included
------------------------	--------------------------------	---------------------------	----------------------	----------



March 11, 2025

IGI Report Number **LG690505832**

Description **LABORATORY GROWN DIAMOND**Shape and Cutting Style **ROUND BRILLIANT**

Measurements 6.55 - 6.56 X 4.12 MM

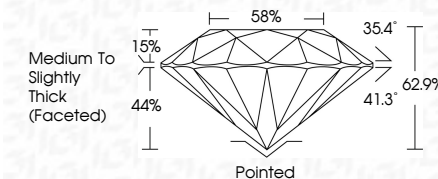
GRADING RESULTS

Carat Weight **1.10 CARAT**

Color Grade E

Clarity Grade VS 1

Cut Grade **EXCELLENT**



ADDITIONAL GRADING INFORMATION

Polish EXCELLENT

Symmetry **EXCELLENT**Fluorescence **NONE**Inscription(s) LG690505832

Comments: This Laboratory Grown Diamond was created by Chemical Vapor Deposition (CVD) growth process.

Type IIa



© IGI 2020, International Gemological Institute

FD - 10 20

www.igi.org



THIS DOCUMENT WAS PRODUCED WITH THE FOLLOWING SECURITY MEASURES: SPECIAL DOCUMENT PAPER, INK SCREENS, WATERMARK, BACKGROUND DESIGNS, HOLOGRAM AND OTHER SECURITY FEATURES NOT LISTED AND DO EXCEED DOCUMENT SECURITY INDUSTRY GUIDELINE

March 11, 2026	GI Report No: LG6905832	
ROUND BRILLIANT		
6.55 - 6.56 X 4.12 MM		
Color Weight	2.10 CARAT	E
Color Grade	VS 1	EXCELLENT
Clarity Grade	VS 1	62.5%
Cut Grade	EXCELLENT	58%
Depth		Medium to Slightly Thick (Faceted)
Table		
Girdle		
Culet		
Polish		
Symmetry		
Fluorescence		
Inscriptions(s)		
		1691 LG6905832

Comments:
 Faceted by Crown Diamond was
 treated by Chemical Vapor Deposition
 (CVD) growth process.
 Type IIG