

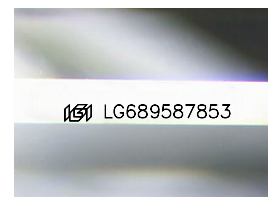
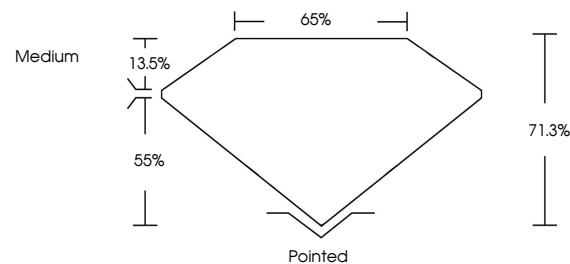


**ELECTRONIC COPY**

## LABORATORY GROWN DIAMOND REPORT

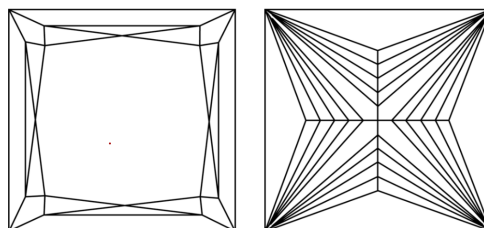
LG689587853  
Report verification at [igi.org](https://igi.org)

## PROPORTIONS



Sample Image Used

## CLARITY CHARACTERISTICS



### KEY TO SYMBOLS

Red symbols indicate internal characteristics.  
Green symbols indicate external characteristics.

## COLOR

D E F G H I J Faint Very Light Light

## CLARITY

IF      VWS<sup>1-2</sup>      VS<sup>1-2</sup>      SI<sup>1-2</sup>      I<sup>1-3</sup>

Internally Flawless	Very Very Slightly Included	Very Slightly Included	Slightly Included	Included
------------------------	--------------------------------	---------------------------	----------------------	----------

## LABORATORY GROWN DIAMOND REPORT



March 11, 2025

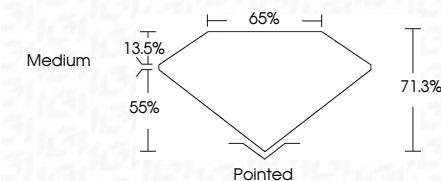
IGI Report Number **LG689587853**Description **LABORATORY GROWN DIAMOND**Shape and Cutting Style **PRINCESS CUT**

Measurements **7.86 X 7.84 X 5.59 MM**

## GRADING RESULTS

Carat Weight **3.01 CARATS**

Color Grade F

Clarity Grade **VVS 1**

### ADDITIONAL GRADING INFORMATION

Polish **EXCELLENT**Symmetry **EXCELLENT**Fluorescence **NONE**Inscription(s)  LG689587853

Comments: This Laboratory Grown Diamond was created by Chemical Vapor Deposition (CVD) growth process.  
Type IIa



**www.igi.org**

© IGI 2020, International Gemological Institute

FD - 10 20



THIS DOCUMENT WAS PRODUCED WITH THE FOLLOWING SECURITY MEASURES: SPECIAL DOCUMENT PAPER, INK SCREENS, WATERMARK, BACKGROUND DESIGNS, HOLOGRAM AND OTHER SECURITY FEATURES NOT LISTED AND DO EXCEED DOCUMENT SECURITY INDUSTRY GUIDELINES

March 11, 2025  
GI Report No LG689587853

7.86 X 7.84 X 5.59 MM	3.01 CARATS
Carat Weight	F
Color Grade	VVS 1
Clarity Grade	71.3%
Depth	65%
Table	Medium
Girdle	Pointed
Quiet	EXCELLENT
Polish	EXCELLENT
Symmetry	NONE
Fluorescence	NONE
Comments	None

**Comments:**  
This Laboratory Grown Diamond was created by Chemical Vapor Deposition (CVD) growth process.