



**INTERNATIONAL
GEMOLOGICAL
INSTITUTE**

ELECTRONIC COPY

LG689585059
Report verification at igi.org

LABORATORY GROWN DIAMOND REPORT



March 11, 2025

IGI Report Number **LG689585059**Description **LABORATORY GROWN DIAMOND**

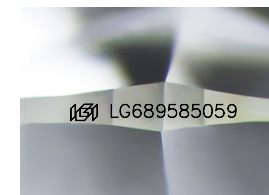
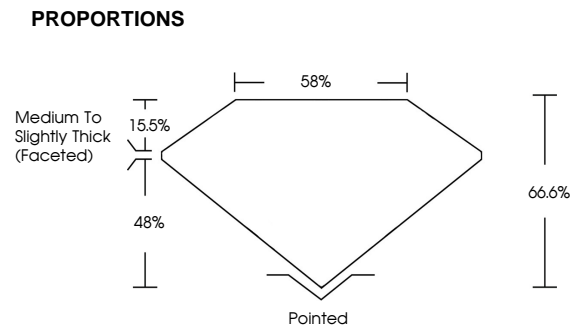
Shape and Cutting Style **CUSHION MODIFIED
BRILLIANT**

Measurements **8.39 X 6.28 X 4.18 MM**

GRADING RESULTS

Carat Weight 1.69 CARAT

Color Grade D

Clarity Grade **VVS 2**

Sample Image Used

COLOR

D E F G H I J Faint Very Light Light

CLARITY

IF WS¹⁻² VS¹⁻² SI¹⁻² |¹⁻³

Internally Flawless	Very Very Slightly Included	Very Slightly Included	Slightly Included	Included
------------------------	--------------------------------	---------------------------	----------------------	----------

ADDITIONAL GRADING INFORMATION

Polish EXCELLENT

Symmetry **EXCELLENT**Fluorescence **NONE**Inscription(s) LG689585059

Comments: This Laboratory Grown Diamond was created by Chemical Vapor Deposition (CVD) growth process.
Type IIa



© IGI 2020, International Gemological Institute

FD - 10 20

www.igi.org

THIS DOCUMENT WAS PRODUCED WITH THE FOLLOWING SECURITY MEASURES: SPECIAL DOCUMENT PAPER, INK SCREENS, WATERMARK, BACKGROUND DESIGNS, HOLOGRAM AND OTHER SECURITY FEATURES NOT LISTED AND DO EXCEED DOCUMENT SECURITY INDUSTRY GUIDELINES

March 11, 2005	GI Report No. LG49958059	CUSHION MODIFIED BRILLIANT
3.97 X 4.28 X 4.18 MM	Carat Weight	1.69 CARAT
Color Grade	Clarity Grade	D
Depth	Table	VVS 2
Gable	85%	66.0%
Medium to Slightly Thick (Faceted)		
Pointed		
Excellent		
Excellent		
NONE		
1691 LG49958059		

Comments: This is a very clean diamond was created by Chemical Vapor Deposition (CVD) growth process.

Type IIA