



# INTERNATIONAL GEMOLOGICAL INSTITUTE

ELECTRONIC COPY

## LABORATORY GROWN DIAMOND REPORT

March 29, 2025  
IGI Report Number **LG689580158**  
Description **LABORATORY GROWN DIAMOND**  
Shape and Cutting Style **ROUND BRILLIANT**  
Measurements **6.28 - 6.34 X 3.98 MM**

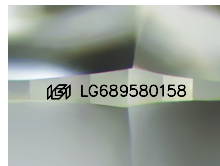
### GRADING RESULTS

Carat Weight **0.98 CARAT**  
Color Grade **FANCY LIGHT PINK**  
Clarity Grade **VS 2**  
Cut Grade **VERY GOOD**

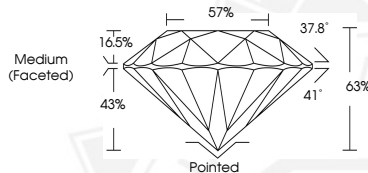
### ADDITIONAL GRADING INFORMATION

Polish **VERY GOOD**  
Symmetry **VERY GOOD**  
Fluorescence **SLIGHT**  
Inscription(s) **IGI LG689580158**

Comments: This Laboratory Grown Diamond was created by High Pressure High Temperature (HPHT) growth process. Indications of post-growth treatment.



Sample Image Used



March 29, 2025  
IGI Report Number **LG689580158**  
ROUND BRILLIANT  
LABORATORY GROWN DIAMOND  
**6.28 - 6.34 X 3.98 MM**  
Carat Weight **0.98 CARAT**  
Color Grade **FANCY LIGHT PINK**  
Clarity Grade **VS 2**  
Cut Grade **VERY GOOD**  
Polish **VERY GOOD**  
Symmetry **VERY GOOD**  
Fluorescence **SLIGHT**  
Inscription(s) **IGI LG689580158**

Comments: This Laboratory Grown Diamond was created by High Pressure High Temperature (HPHT) growth process. Indications of post-growth treatment.



March 29, 2025  
IGI Report Number **LG689580158**  
ROUND BRILLIANT  
LABORATORY GROWN DIAMOND  
**6.28 - 6.34 X 3.98 MM**  
Carat Weight **0.98 CARAT**  
Color Grade **FANCY LIGHT PINK**  
Clarity Grade **VS 2**  
Cut Grade **VERY GOOD**  
Polish **VERY GOOD**  
Symmetry **VERY GOOD**  
Fluorescence **SLIGHT**  
Inscription(s) **IGI LG689580158**

Comments: This Laboratory Grown Diamond was created by High Pressure High Temperature (HPHT) growth process. Indications of post-growth treatment.



THIS DOCUMENT WAS PRODUCED WITH THE FOLLOWING SECURITY MEASURES: SPECIAL DOCUMENT PAPER, INK SCREENS, WATERMARK, BACKGROUND DESIGNS, HOLOGRAM AND OTHER SECURITY FEATURES NOT LISTED AND DO EXCEED DOCUMENT SECURITY INDUSTRY GUIDELINES.

For terms & conditions and to verify this report, please visit [www.igi.org](http://www.igi.org)