



ELECTRONIC COPY

LABORATORY GROWN DIAMOND REPORT

March 8, 2025	
IGI Report Number	LG689579771
Description	LABORATORY GROWN DIAMOND
Shape and Cutting Style	ROUND BRILLIANT
Measurements	10.98 - 11.05 X 6.80 MM

GRADING RESULTS

Carat Weight	5.05 CARATS
Color Grade	E
Clarity Grade	VVS 2
Cut Grade	IDEAL

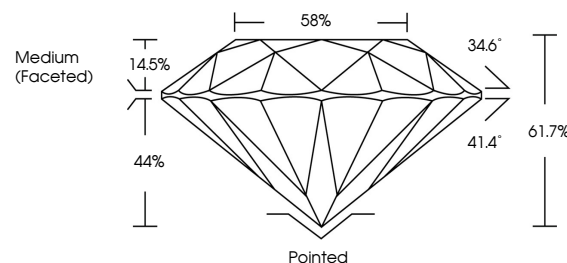
ADDITIONAL GRADING INFORMATION

Polish	EXCELLENT
Symmetry	EXCELLENT
Fluorescence	NONE
Inscription(s)	151 LG689579771

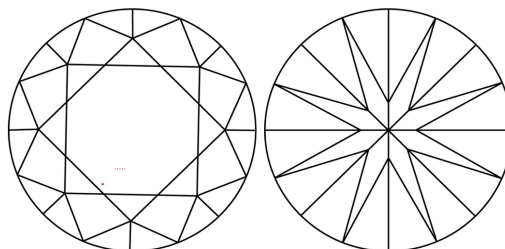
Comments: This Laboratory Grown Diamond was created by Chemical Vapor Deposition (CVD) growth process.
Type IIa

LG689579771
Report verification at [igi.org](https://www.igi.org)

PROPORTIONS

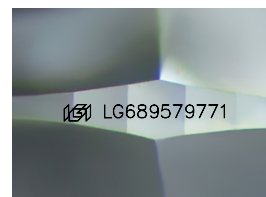


CLARITY CHARACTERISTICS



KEY TO SYMBOLS

Red symbols indicate internal characteristics.
Green symbols indicate external characteristics.



Sample Image Used

COLOR

D E F G H I J Faint Very Light Light

CLARITY

IF VS¹⁻² VS¹⁻² SI¹⁻² |¹⁻³

Internally Flawless	Very Very Slightly Included	Very Slightly Included	Slightly Included	Included
------------------------	--------------------------------	---------------------------	----------------------	----------

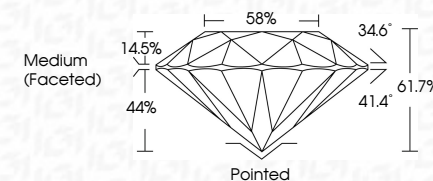
LABORATORY GROWN DIAMOND REPORT



March 8, 2025	
IGI Report Number	LG689579771
Description	LABORATORY GROWN DIAMOND
Shape and Cutting Style	ROUND BRILLIANT
Measurements	10.98 - 11.05 X 6.80 MM

GRADING RESULTS

Carat Weight	5.05 CARATS
Color Grade	E
Clarity Grade	VVS 2
Cut Grade	IDEAL



ADDITIONAL GRADING INFORMATION

Polish	EXCELLENT
Symmetry	EXCELLENT
Fluorescence	NONE
Inscription(s)	LG LG689579771
<p>Comments: This Laboratory Grown Diamond was created by Chemical Vapor Deposition (CVD) growth process.</p> <p>Type IIa</p>	



© IGI 2020, International Gemological Institute

FD - 10 20



THIS DOCUMENT WAS PRODUCED WITH THE FOLLOWING SECURITY MEASURES: SPECIAL DOCUMENT PAPER, INK SCREENS, WATERMARK, BACKGROUND DESIGNS, HOLOGRAM AND OTHER SECURITY FEATURES NOT LISTED AND DO EXCEED DOCUMENT SECURITY INDUSTRY GUIDELINES

www.igi.org

March 8, 2025	Report No. LG56957771	ROUND BRILLIANT	10.98 - 11.05 X 6.80 MM	Carat Weight Color Grade Clarity Grade Cut Grade Depth Table Girdle	5.05 CARATS E VVS 2 IDEAL 61.7% 58% Medium (Frosted)	Pointed EXCELLENT EXCELLENT NONE IGS LG56957771	Comments: The Laboratory Grown Diamond was created by Chemical Vapor Deposition (CVD) growth process. Type IIA
---------------	-----------------------	-----------------	-------------------------	---	--	---	--