



# INTERNATIONAL GEMOLOGICAL INSTITUTE

ELECTRONIC COPY



March 22, 2025

IGI Report Number **LG689573651**  
ROUND BRILLIANT  
LABORATORY GROWN DIAMOND  
4.42 - 4.45 X 2.75 MM

Carat Weight **0.33 CARAT**  
Color Grade **FANCY LIGHT BLUE**  
Clarity Grade **VVS 2**  
Cut Grade **IDEAL**  
Polish **EXCELLENT**  
Symmetry **EXCELLENT**  
Fluorescence **NONE**  
Inscription(s) **IGI LG689573651**

Comments: As Grown - No indication of post-growth treatment. This Laboratory Grown Diamond was created by High Pressure High Temperature (HPHT) growth process.



March 22, 2025

IGI Report Number **LG689573651**  
ROUND BRILLIANT  
LABORATORY GROWN DIAMOND  
4.42 - 4.45 X 2.75 MM

Carat Weight **0.33 CARAT**  
Color Grade **FANCY LIGHT BLUE**  
Clarity Grade **VVS 2**  
Cut Grade **IDEAL**  
Polish **EXCELLENT**  
Symmetry **EXCELLENT**  
Fluorescence **NONE**  
Inscription(s) **IGI LG689573651**

Comments: As Grown - No indication of post-growth treatment. This Laboratory Grown Diamond was created by High Pressure High Temperature (HPHT) growth process.

## LABORATORY GROWN DIAMOND REPORT

March 22, 2025  
IGI Report Number **LG689573651**  
Description **LABORATORY GROWN DIAMOND**  
Shape and Cutting Style **ROUND BRILLIANT**  
Measurements **4.42 - 4.45 X 2.75 MM**

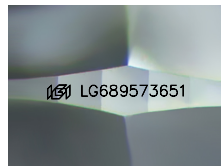
### GRADING RESULTS

Carat Weight **0.33 CARAT**  
Color Grade **FANCY LIGHT BLUE**  
Clarity Grade **VVS 2**  
Cut Grade **IDEAL**

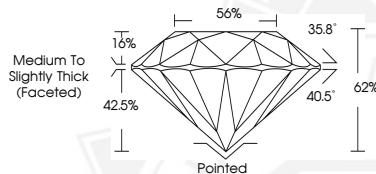
### ADDITIONAL GRADING INFORMATION

Polish **EXCELLENT**  
Symmetry **EXCELLENT**  
Fluorescence **NONE**  
Inscription(s) **IGI LG689573651**

Comments: As Grown - No indication of post-growth treatment. This Laboratory Grown Diamond was created by High Pressure High Temperature (HPHT) growth process.



Sample Image Used



THIS DOCUMENT WAS PRODUCED WITH THE FOLLOWING SECURITY MEASURES: SPECIAL DOCUMENT PAPER, INK SCREENS, WATERMARK, BACKGROUND DESIGNS, HOLOGRAM AND OTHER SECURITY FEATURES NOT LISTED AND DO EXCEED DOCUMENT SECURITY INDUSTRY GUIDELINES.

For terms & conditions and to verify this report, please visit [www.igi.org](http://www.igi.org)