



ELECTRONIC COPY

LG689572797
Report verification at igi.org



March 26, 2025
IGI Report Number **LG689572797**
Description **LABORATORY GROWN DIAMOND**
Shape and Cutting Style **ROUND BRILLIANT**
Measurements **7.67 - 7.74 X 4.85 MM**
GRADING RESULTS
Carat Weight **1.80 CARAT**
Color Grade **FANCY INTENSE PINK**
Clarity Grade **VS 1**
Cut Grade **EXCELLENT**

March 26, 2025
IGI Report Number **LG689572797**
Description **LABORATORY GROWN DIAMOND**
Shape and Cutting Style **ROUND BRILLIANT**
Measurements **7.67 - 7.74 X 4.85 MM**

GRADING RESULTS

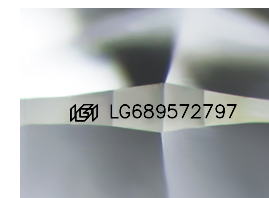
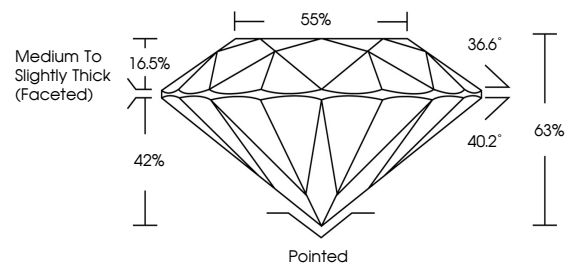
Carat Weight **1.80 CARAT**
Color Grade **FANCY INTENSE PINK**
Clarity Grade **VS 1**
Cut Grade **EXCELLENT**

ADDITIONAL GRADING INFORMATION

Polish **EXCELLENT**
Symmetry **EXCELLENT**
Fluorescence **SLIGHT**
Inscription(s) **IGI LG689572797**

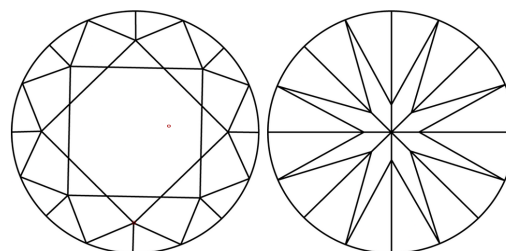
Comments: This Laboratory Grown Diamond was created by Chemical Vapor Deposition (CVD) growth process.
Indications of post-growth treatment.

PROPORTIONS



Sample Image Used

CLARITY CHARACTERISTICS



KEY TO SYMBOLS

Red symbols indicate internal characteristics.
Green symbols indicate external characteristics.

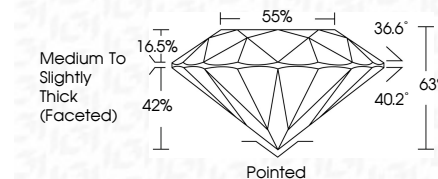
COLOR

D E F G H I J Faint Very Light Light

CLARITY

IF WS¹⁻² VS¹⁻² SI¹⁻² I¹⁻³

Internally Flawless Very Very Slightly Included Very Slightly Included Slightly Included Included



ADDITIONAL GRADING INFORMATION

Polish **EXCELLENT**
Symmetry **EXCELLENT**
Fluorescence **SLIGHT**
Inscription(s) **IGI LG689572797**
Comments: This Laboratory Grown Diamond was created by Chemical Vapor Deposition (CVD) growth process.
Indications of post-growth treatment.



IGI



March 26, 2025
IGI Report No LG689572797
ROUND BRILLIANT
1.80 CARAT
7.67 - 7.74 X 4.85 MM
FANCY INTENSE PINK
Color Grade
VS 1
EXCELLENT
Depth 65%
Table 85%
Medium To Slightly Thick (Faceted)
Pointed
EXCELLENT
Symmetry EXCELLENT
Fluorescence SLIGHT
Inscription(s) IGI LG689572797
Comments: This Laboratory Grown Diamond was created by Chemical Vapor Deposition (CVD) growth process.
Indications of post-growth treatment.