



**ELECTRONIC COPY**

## LABORATORY GROWN DIAMOND REPORT

May 8, 2025	
IGI Report Number	LG689566696
Description	LABORATORY GROWN DIAMOND
Shape and Cutting Style	SQUARE EMERALD CUT
Measurements	8.74 X 8.73 X 5.74 MM

## GRADING RESULTS

Carat Weight	3.92 CARATS
Color Grade	D
Clarity Grade	INTERNALLY FLAWLESS

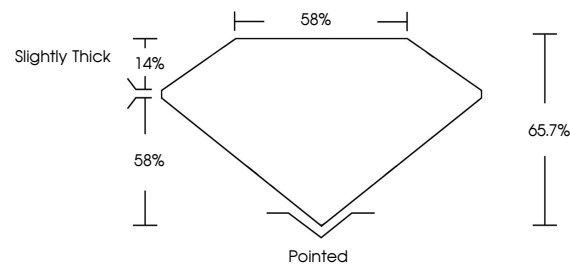
### ADDITIONAL GRADING INFORMATION

Polish	EXCELLENT
Symmetry	EXCELLENT
Fluorescence	NONE
Inscription(s)	 LG689566696

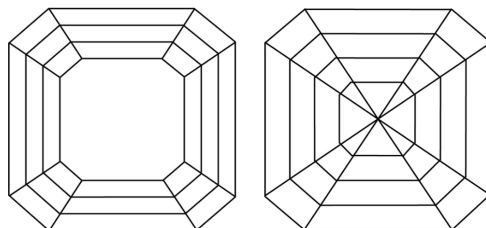
Comments: As Grown - No indication of post-growth treatment.  
This Laboratory Grown Diamond was created by High Pressure High Temperature (HPHT) growth process.  
Type II

LG689566696  
Report verification at [igi.org](https://igi.org)

## PROPORTIONS

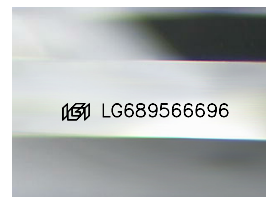


## CLARITY CHARACTERISTICS



## KEY TO SYMBOLS

Red symbols indicate internal characteristics.  
Green symbols indicate external characteristics.



Sample Image Used

## COLOR

D E F G H I J Faint Very Light Light

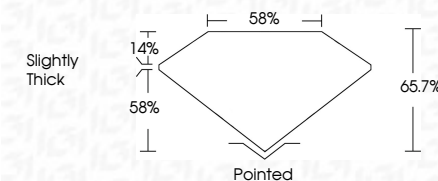
## CLARITY

IF	VS <sup>1-2</sup>	VS <sup>1-2</sup>	SI <sup>1-2</sup>	I <sup>1-3</sup>
Internally Flawless	Very Very Slightly Included	Very Slightly Included	Slightly Included	Included

## LABORATORY GROWN DIAMOND REPORT



May 8, 2025	
IGI Report Number	LG689566696
Description	LABORATORY GROWN DIAMOND
Shape and Cutting Style	SQUARE EMERALD CUT
Measurements	8.74 X 8.73 X 5.74 MM
GRADING RESULTS	
Carat Weight	3.92 CARATS
Color Grade	D
Clarity Grade	INTERNALLY FLAWLESS



### ADDITIONAL GRADING INFORMATION

Polish	EXCELLENT
Symmetry	EXCELLENT
Fluorescence	NONE
Inscription(s)	<del>(G)</del> LG689566696
<p>Comments: As Grown - No indication of post-growth treatment.</p> <p>This Laboratory Grown Diamond was created by High Pressure High Temperature (HPHT) growth process.</p> <p>Type II</p>	



© IGI 2020, International Gemological Institute

FD - 10 20



THIS DOCUMENT WAS PRODUCED WITH THE FOLLOWING SECURITY MEASURES: SPECIAL DOCUMENT PAPER, INK SCREENS, WATERMARK, BACKGROUND DESIGNS, HOLOGRAM AND OTHER SECURITY FEATURES NOT LISTED AND DO EXCEED DOCUMENT SECURITY INDUSTRY GUIDELINES

**www.igi.org**

<b>May 8, 2026</b>	<b>GI Report No LG98956696</b>	<b>3,92 CAGATS</b>	<b>D</b>	<b>LF</b>	<b>65.7%</b>	<b>58%</b>	<b>Slightly Thick</b>	<b>Culet</b>	<b>Pointed</b>	<b>EXCELLENT</b>	<b>EXCELLENT</b>	<b>NONE</b>	<b>#69 LG98956696</b>
<b>SQIARE EMBALD CUT</b>	<b>Carat Weight</b>	<b>3.92 MM</b>	<b>Color Grade</b>	<b>Clarity Grade</b>	<b>Depth</b>	<b>Table</b>	<b>Girdle</b>	<b>Symmetry</b>	<b>Fluorescence</b>	<b>Inclusions(s)</b>	<b>Comments:</b>		
	<b>3.92 X 8.73 X 5.74 MM</b>										<b>A's Grown - No indication of post-growth treatment.</b>		
											<b>The Lab's Very Green Diamond was cut by a highly skilled High Pressure High Temperature (HPHT) growth process.</b>		

**Comments:**  
As Grown - No Indication of post-growth treatment  
This Laboratory Grown Diamond was created by High Pressure High Temperature (HPHT) growth process.