



ELECTRONIC COPY

LG689558826
Report verification at igi.org



March 21, 2025
IGI Report Number **LG689558826**
Description **LABORATORY GROWN DIAMOND**
Shape and Cutting Style **CUT CORNERED
RECTANGULAR MODIFIED
BRILLIANT**
Measurements **13.03 X 8.18 X 5.32 MM**
GRADING RESULTS
Carat Weight **5.09 CARATS**
Color Grade **FANCY VIVID ORANGE PINK**
Clarity Grade **VS 1**

March 21, 2025
IGI Report Number **LG689558826**
Description **LABORATORY GROWN DIAMOND**
Shape and Cutting Style **CUT CORNERED RECTANGULAR
MODIFIED BRILLIANT**
Measurements **13.03 X 8.18 X 5.32 MM**

GRADING RESULTS

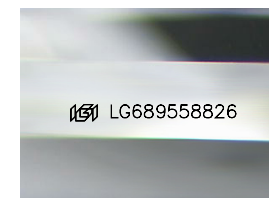
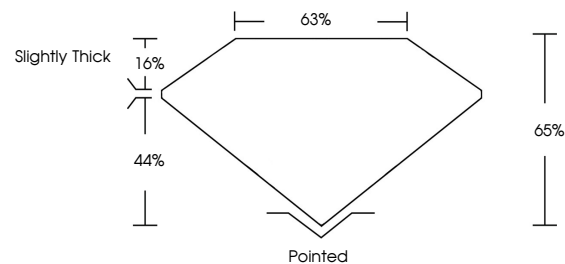
Carat Weight **5.09 CARATS**
Color Grade **FANCY VIVID ORANGE PINK**
Clarity Grade **VS 1**

ADDITIONAL GRADING INFORMATION

Polish **EXCELLENT**
Symmetry **EXCELLENT**
Fluorescence **SLIGHT**
Inscription(s) **IGI LG689558826**

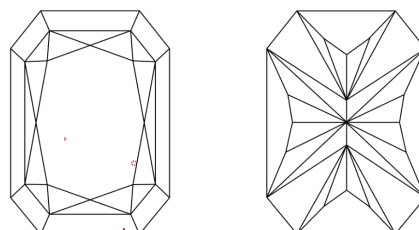
Comments: This Laboratory Grown Diamond was created by Chemical Vapor Deposition (CVD) growth process. Indications of post-growth treatment.

PROPORTIONS



Sample Image Used

CLARITY CHARACTERISTICS



KEY TO SYMBOLS

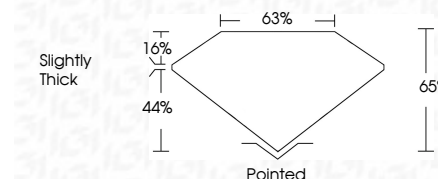
Red symbols indicate internal characteristics.
Green symbols indicate external characteristics.

COLOR

D E F G H I J Faint Very Light Light

CLARITY

IF	VS ¹⁻²	VS ¹⁻²	SI ¹⁻²	I ¹⁻³
Internally Flawless	Very Very Slightly Included	Very Slightly Included	Slightly Included	Included



ADDITIONAL GRADING INFORMATION

Polish **EXCELLENT**
Symmetry **EXCELLENT**
Fluorescence **SLIGHT**
Inscription(s) **IGI LG689558826**
Comments: This Laboratory Grown Diamond was created by Chemical Vapor Deposition (CVD) growth process. Indications of post-growth treatment.



IGI



March 21, 2025
IGI Report No **LG689558826**
CUT CORNERED RECT. MODIFIED BRILLIANT
13.03 X 8.18 X 5.32 MM
Carat Weight **5.09 CARATS**
Color Grade **FANCY VIVID ORANGE PINK**
Clarity Grade **VS 1**
Depth **65%**
Table **65%**
Girdle **Slightly Thick**
Culet **Pointed**
Polish **EXCELLENT**
Symmetry **EXCELLENT**
Fluorescence **SLIGHT**
Inscription(s) **IGI LG689558826**

Comments: This Laboratory Grown Diamond was created by Chemical Vapor Deposition (CVD) growth process. Indications of post-growth treatment.