



**INTERNATIONAL
GEMOLOGICAL
INSTITUTE**

ELECTRONIC COPY

LG689557987

LABORATORY GROWN DIAMOND REPORT

March 21, 2025
IGI Report Number **LG689557987**
Description **LABORATORY GROWN DIAMOND**
Shape and Cutting Style **CUSHION BRILLIANT**
Measurements **8.95 X 8.52 X 5.88 MM**

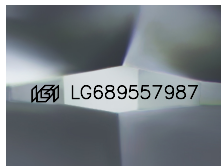
GRADING RESULTS

Carat Weight **3.50 CARATS**
Color Grade **D**
Clarity Grade **SI 1**
Cut Grade **VERY GOOD**

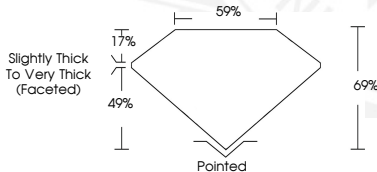
ADDITIONAL GRADING INFORMATION

Polish **EXCELLENT**
Symmetry **EXCELLENT**
Fluorescence **NONE**
Inscription(s) **IGI LG689557987**

Comments: Pre-existing laser inscription on girdle. As Grown - No indication of post-growth treatment. This Laboratory Grown Diamond was created by High Pressure High Temperature (HPHT) growth process.



Sample Image Used



March 21, 2025
IGI Report Number **LG689557987**
CUSHION BRILLIANT
LABORATORY GROWN DIAMOND
8.95 X 8.52 X 5.88 MM
Carat Weight **3.50 CARATS**
Color Grade **D**
Clarity Grade **SI 1**
Cut Grade **VERY GOOD**
Polish **EXCELLENT**
Symmetry **EXCELLENT**
Fluorescence **NONE**
Inscription(s) **IGI LG689557987**

Comments: Pre-existing laser inscription on girdle. As Grown - No indication of post-growth treatment. This Laboratory Grown Diamond was created by High Pressure High Temperature (HPHT) growth process.



March 21, 2025
IGI Report Number **LG689557987**
CUSHION BRILLIANT
LABORATORY GROWN DIAMOND
8.95 X 8.52 X 5.88 MM
Carat Weight **3.50 CARATS**
Color Grade **D**
Clarity Grade **SI 1**
Cut Grade **VERY GOOD**
Polish **EXCELLENT**
Symmetry **EXCELLENT**
Fluorescence **NONE**
Inscription(s) **IGI LG689557987**

Comments: Pre-existing laser inscription on girdle. As Grown - No indication of post-growth treatment. This Laboratory Grown Diamond was created by High Pressure High Temperature (HPHT) growth process.

THIS DOCUMENT WAS PRODUCED WITH THE FOLLOWING SECURITY MEASURES: SPECIAL DOCUMENT PAPER, INK SCREENS, WATERMARK, BACKGROUND DESIGNS, HOLOGRAM AND OTHER SECURITY FEATURES NOT LISTED AND DO EXCEED DOCUMENT SECURITY INDUSTRY GUIDELINES.

For terms & conditions and to verify this report, please visit www.igi.org