

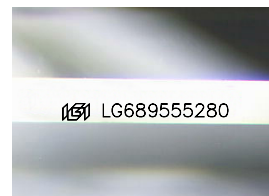
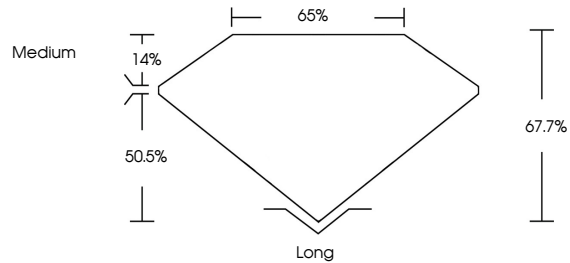


**INTERNATIONAL
GEMOLOGICAL
INSTITUTE**

ELECTRONIC COPY

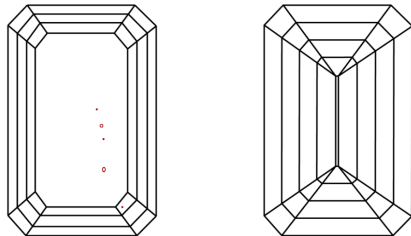
LG689555280
Report verification at igi.org

PROPORTIONS



Sample Image Used

CLARITY CHARACTERISTICS



KEY TO SYMBOLS

Red symbols indicate internal characteristics.
Green symbols indicate external characteristics.

COLOR

D E F G H I J Faint Very Light Light

CLARITY

IF WS¹⁻² VS¹⁻² SI¹⁻² I¹⁻³

| | | | | |
|------------------------|--------------------------------|---------------------------|----------------------|----------|
| Internally Flawless | Very Very Slightly Included | Very Slightly Included | Slightly Included | Included |
|------------------------|--------------------------------|---------------------------|----------------------|----------|



© IGI 2020, International Gemological Institute

FD - 10 20

www.igi.org

THIS DOCUMENT WAS PRODUCED WITH THE FOLLOWING SECURITY MEASURES: SPECIAL DOCUMENT PAPER, INK SCREENS, WATERMARK BACKGROUND DESIGNS, HOLOGRAM AND OTHER SECURITY FEATURES NOT LISTED AND DO EXCEED DOCUMENT SECURITY INDUSTRY GUIDELINES.

LABORATORY GROWN DIAMOND REPORT



March 7, 2025

IGI Report Number **LG689555280**

| | |
|-------------|--------------------------|
| Description | LABORATORY GROWN DIAMOND |
|-------------|--------------------------|

Shape and Cutting Style **EMERALD CUT**

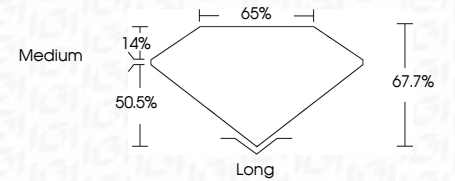
Measurements 10.44 X 7.73 X 5.23 MM

GRADING RESULTS

Carat Weight **4.09 CARATS**

Color Grade **E**

Clarity Grade **VS 2**



ADDITIONAL GRADING INFORMATION

Polish **EXCELLENT**Symmetry **EXCELLENT**Fluorescence **NONE**Inscription(s)  LG689555280

Comments: This Laboratory Grown Diamond was created by Chemical Vapor Deposition (CVD) growth process.
Type IIa



IGI

| | | | |
|-------------------------|------------------------|-------------|-----------------|
| March 7, 2025 | 10.44 X 7.73 X 5.23 MM | 4.0% CARATS | Long |
| GJ Report No LG49656280 | Carat Weight | E | EXCELLENT |
| GENERAL CUT | Color Grade | VS 2 | EXCELLENT |
| | Clarity Grade | 67.7% | NONE |
| | Depth | 66% | |
| | Table | Medium | |
| | Girdle | | |
| | Culet | | |
| | Polish | | |
| Symmetry | | | |
| Fluorescence | | | |
| Inscription(s) | | | (69) LG49656280 |

Comments:
 This Laboratory Grown Diamond was
 created by Chemical Vapor Deposition
 (CVD) growth process.
 Type IId

This Laboratory Grown Diamond was created by Chemical Vapor Deposition (CVD) growth process.
Type IIa