



ELECTRONIC COPY

LG689545633
Report verification at igi.org



March 10, 2025
IGI Report Number **LG689545633**
Description **LABORATORY GROWN DIAMOND**
Shape and Cutting Style **HEXAGONAL MODIFIED STEP CUT**
Measurements **16.68 X 8.42 X 5.74 MM**
GRADING RESULTS
Carat Weight **6.55 CARATS**
Color Grade **F**
Clarity Grade **VVS 2**

March 10, 2025
IGI Report Number **LG689545633**
Description **LABORATORY GROWN DIAMOND**
Shape and Cutting Style **HEXAGONAL MODIFIED STEP CUT**
Measurements **16.68 X 8.42 X 5.74 MM**

GRADING RESULTS

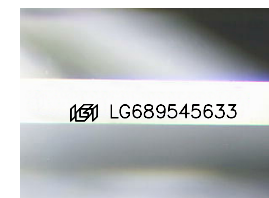
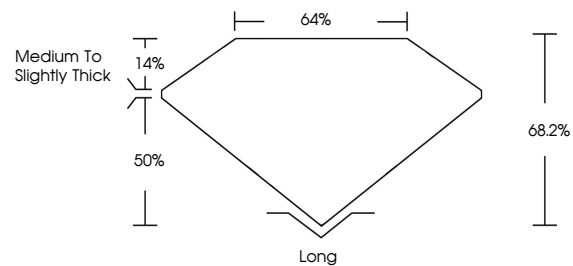
Carat Weight **6.55 CARATS**
Color Grade **F**
Clarity Grade **VVS 2**

ADDITIONAL GRADING INFORMATION

Polish **EXCELLENT**
Symmetry **EXCELLENT**
Fluorescence **NONE**
Inscription(s) **IGI LG689545633**

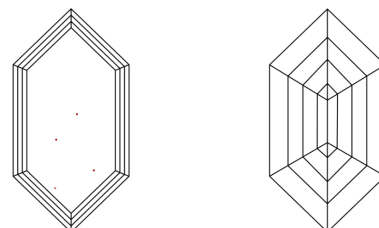
Comments: This Laboratory Grown Diamond was created by Chemical Vapor Deposition (CVD) growth process. Type IIa

PROPORTIONS



Sample Image Used

CLARITY CHARACTERISTICS



KEY TO SYMBOLS

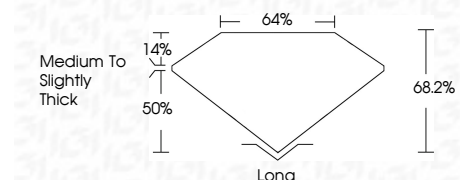
Red symbols indicate internal characteristics.
Green symbols indicate external characteristics.

COLOR

D E F G H I J Faint Very Light Light

CLARITY

IF	VS ¹⁻²	VS ¹⁻²	SI ¹⁻²	I ¹⁻³
Internally Flawless	Very Very Slightly Included	Very Slightly Included	Slightly Included	Included



ADDITIONAL GRADING INFORMATION

Polish **EXCELLENT**
Symmetry **EXCELLENT**
Fluorescence **NONE**
Inscription(s) **IGI LG689545633**
Comments: This Laboratory Grown Diamond was created by Chemical Vapor Deposition (CVD) growth process. Type IIa



March 10, 2025
IGI Report No **LG689545633**
HEXAGONAL MODIFIED STEP CUT
16.68 X 8.42 X 5.74 MM
Carat Weight **6.55 CARATS**
Color Grade **F**
Clarity Grade **VVS 2**
Depth **68.2%**
Table **64%**
Girdle **Medium to Slightly Thick**
Culet **Long**
Polish **EXCELLENT**
Symmetry **EXCELLENT**
Fluorescence **NONE**
Inscription(s) **IGI LG689545633**
Comments: This Laboratory Grown Diamond was created by Chemical Vapor Deposition (CVD) growth process. Type IIa