

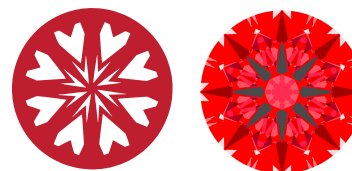


# INTERNATIONAL GEMOLOGICAL INSTITUTE

LG689537402  
Report verification at igi.org

## LIGHT PERFORMANCE REPORT

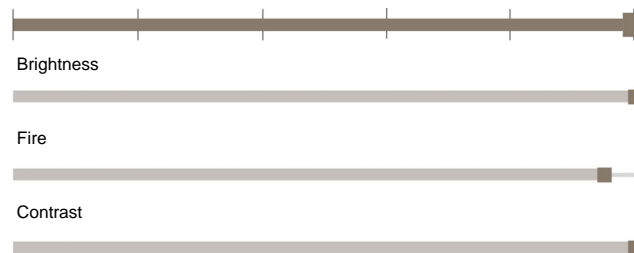
Light Performance Grade: **Exceptional**



Ideal-Scope representation

Low Moderate High Superior Exceptional

### Light Performance



### COLOR

D E F G H I J Faint Very Light Light

### CLARITY

IF	VS 1-2	VS 1-2	SI 1-2	I 1-3
Internally Flawless	Very Very Slightly Included	Very Slightly Included	Slightly Included	Included

## ELECTRONIC COPY

## LABORATORY GROWN DIAMOND REPORT

March 17, 2025  
 IGI Report Number **LG689537402**  
 Description **LABORATORY GROWN DIAMOND**  
 Shape and Cutting Style **ROUND BRILLIANT**  
 Measurements **11.03 - 11.09 x 6.71 mm**

### GRADING RESULTS

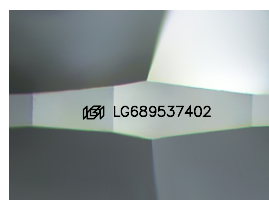
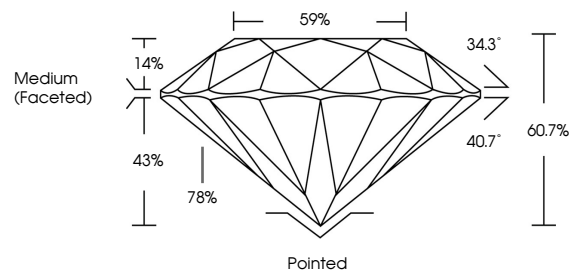
Carat Weight **5.06 CARATS**  
 Color Grade **F**  
 Clarity Grade **VVS 2**  
 Cut Grade **IDEAL**

### ADDITIONAL GRADING INFORMATION

Polish **EXCELLENT**  
 Symmetry **EXCELLENT**  
 Fluorescence **NONE**  
 Inscription(s) **IGI LG689537402**

Comments: HEARTS & ARROWS  
 This Laboratory Grown Diamond was created by Chemical Vapor Deposition (CVD) growth process. Type IIa

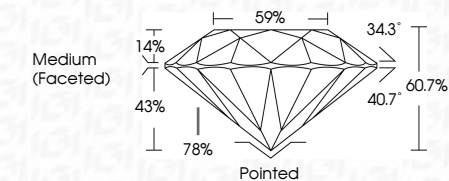
### PROPORTIONS



Sample Image Used



March 17, 2025  
 IGI Report Number **LG689537402**  
 Description **LABORATORY GROWN DIAMOND**  
 Shape and Cutting Style **ROUND BRILLIANT**  
 Measurements **11.03 - 11.09 X 6.71 MM**  
**GRADING RESULTS**  
 Carat Weight **5.06 CARATS**  
 Color Grade **F**  
 Clarity Grade **VVS 2**  
 Cut Grade **IDEAL**



### ADDITIONAL GRADING INFORMATION

Polish **EXCELLENT**  
 Symmetry **EXCELLENT**  
 Fluorescence **NONE**  
 Inscription(s) **IGI LG689537402**  
 Comments: HEARTS & ARROWS  
 This Laboratory Grown Diamond was created by Chemical Vapor Deposition (CVD) growth process. Type IIa



# IGI

March 17, 2025  
 IGI Report No. LG689537402  
**ROUND BRILLIANT**  
 Measurements **11.03 - 11.09 X 6.71 MM**  
 Carat Weight **5.06 CARATS**  
 Color Grade **F**  
 Clarity Grade **VVS 2**  
 Cut Grade **IDEAL**  
 Depth **43%**  
 Table **14%**  
 Pavilion Angle **78%**  
 Crown Angle **34.3°**  
 Total Depth **60.7%**  
 Cut Grade **IDEAL**  
 Clarity Grade **VVS 2**  
 Color Grade **F**  
 Fluorescence **NONE**  
 Inscription(s) **IGI LG689537402**  
 Comments: **HEARTS & ARROWS**  
 This Laboratory Grown Diamond was created by Chemical Vapor Deposition (CVD) growth process. Type IIa

