



**INTERNATIONAL
GEMOLOGICAL
INSTITUTE**

ELECTRONIC COPY

LG689527429
Report verification at igi.org

LABORATORY GROWN DIAMOND REPORT



March 10, 2025

IGI Report Number **LG689527429**

Description	LABORATORY GROWN DIAMOND
-------------	--------------------------

Shape and Cutting Style **CUSHION MODIFIED
BRILLIANT**

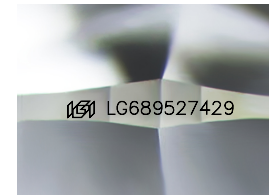
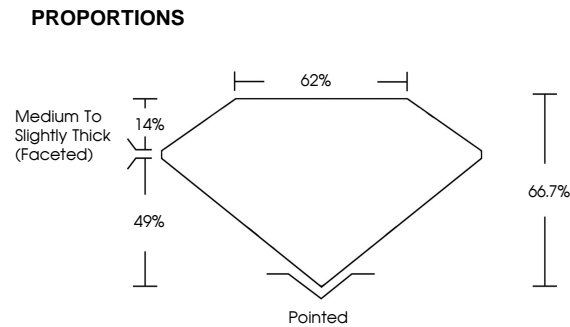
Measurements **7.70 X 6.36 X 4.24 MM**

GRADING RESULTS

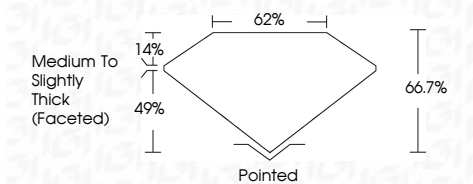
Carat Weight **1.64 CARAT**

Color Grade	E
-------------	---

Clarity Grade **VS 1**



Sample Image Used



COLOR

D E F G H I J Faint Very Light Light

CLARITY

IF WS¹⁻² VS¹⁻² SI¹⁻² |¹⁻³

Internally Flawless	Very Very Slightly Included	Very Slightly Included	Slightly Included	Included
------------------------	--------------------------------	---------------------------	----------------------	----------



© IGI 2020, International Gemological Institute

FD - 10 20



THIS DOCUMENT WAS PRODUCED WITH THE FOLLOWING SECURITY MEASURES: SPECIAL DOCUMENT PAPER, INK SCREENS, WATERMARK, BACKGROUND DESIGNS, HOLOGRAM AND OTHER SECURITY FEATURES NOT LISTED AND DO EXCEED DOCUMENT SECURITY INDUSTRY GUIDELINES



IGI

March 10, 2025	GI Report No LG689527429	1.64 CARAT
CUSHION MODIFIED BRILLIANT		
7.70 X 6.53 X 4.24 MM		
Corat Weight	VS 1	
Color Grade	66.7%	
Clarity Grade	62%	
Depth	Medium to Slightly	
Table	Thick (Faceted)	
Girdle		
Culet	Pointed	
Polish	EXCELLENT	
Symmetry	EXCELLENT	
Fluorescence	NONE	
Inscriptions	889 LG689527429	

Comments:
This Laboratory Grown Diamond was
created by Chemical Vapor Deposition
(CVD) growth process.
type IIa

www.igi.org