

ELECTRONIC COPY

LABORATORY GROWN DIAMOND REPORT

| | |
|-------------------------|--|
| March 7, 2025 | |
| IGI Report Number | LG689526930 |
| Description | LABORATORY GROWN DIAMOND |
| Shape and Cutting Style | CUT CORNERED RECTANGULAR MODIFIED BRILLIANT |
| Measurements | 8.19 X 5.70 X 3.87 MM |

GRADING RESULTS

| | |
|---------------|------------|
| Carat Weight | 1.56 CARAT |
| Color Grade | D |
| Clarity Grade | VVS 2 |

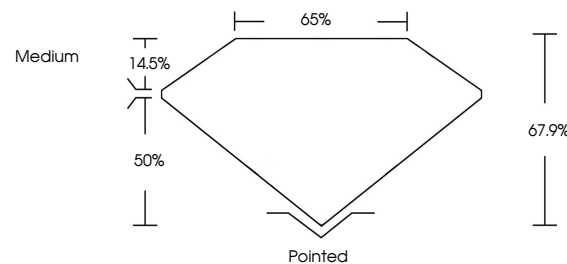
ADDITIONAL GRADING INFORMATION

| | |
|----------------|---|
| Polish | EXCELLENT |
| Symmetry | EXCELLENT |
| Fluorescence | NONE |
| Inscription(s) |  LG689526930 |

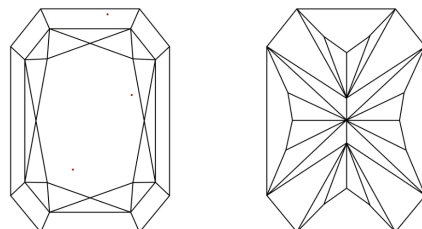
Comments: This Laboratory Grown Diamond was created by Chemical Vapor Deposition (CVD) growth process.
Type IIa

LG689526930
Report verification at igi.org

PROPORTIONS

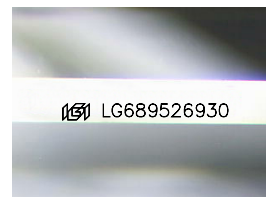


CLARITY CHARACTERISTICS



KEY TO SYMBOLS

Red symbols indicate internal characteristics.
Green symbols indicate external characteristics.



Sample Image Used

COLOR

D E F G H I J Faint Very Light Light

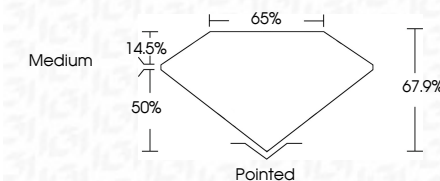
CLARITY

| IF | VS ¹⁻² | VS ¹⁻² | SI ¹⁻² | I ¹⁻³ |
|---------------------|-----------------------------|------------------------|-------------------|------------------|
| Internally Flawless | Very Very Slightly Included | Very Slightly Included | Slightly Included | Included |

LABORATORY GROWN DIAMOND REPORT



| | |
|-------------------------|---|
| March 7, 2025 | |
| IGI Report Number | LG689526930 |
| Description | LABORATORY GROWN DIAMOND |
| Shape and Cutting Style | CUT CORNERED RECTANGULAR MODIFIED BRILLIANT |
| Measurements | 8.19 X 5.70 X 3.87 MM |
| GRADING RESULTS | |
| Carat Weight | 1.56 CARAT |
| Color Grade | D |
| Clarity Grade | VVS 2 |



ADDITIONAL GRADING INFORMATION

| | |
|---|---|
| Polish | EXCELLENT |
| Symmetry | EXCELLENT |
| Fluorescence | NONE |
| Inscription(s) |  LG689526930 |
| <p>Comments: This Laboratory Grown Diamond was created by Chemical Vapor Deposition (CVD) growth process.</p> <p>Type IIa</p> | |



© IGI 2020, International Gemological Institute

FD - 10 20

| | | |
|---|---------------------------------------|-----------------|
| March 7, 2025 | GI Report No. LG46920300 | 1.56 CARAT |
| | COI CORNERED RECT. MODIFIED BRILLIANT | D |
| | 1.19 X 5.70 X 3.87 MM | VS 2 |
| | | 67.9% |
| | | 65% |
| | | Medium |
| | | Pointed |
| | | EXCELLENT |
| | | symmetry |
| | | EXCELLENT |
| | | Fluorescence |
| | | inscriptions(s) |
| | | 1691 LG46920300 |
| Comments: This Laboratory Grown Diamond was created by Chemical Vapor Deposition (CVD) growth process. type IId | | |