



ELECTRONIC COPY

LG689521153
Report verification at igi.org



March 18, 2025

IGI Report Number **LG689521153**

Description **LABORATORY GROWN DIAMOND**

Shape and Cutting Style **ROUND BRILLIANT**

Measurements **9.71 - 9.79 X 5.77 MM**

GRADING RESULTS

Carat Weight **3.37 CARATS**

Color Grade **FANCY VIVID BLUE**

Clarity Grade **VS 2**

Cut Grade **EXCELLENT**

March 18, 2025
IGI Report Number **LG689521153**
Description **LABORATORY GROWN DIAMOND**
Shape and Cutting Style **ROUND BRILLIANT**
Measurements **9.71 - 9.79 X 5.77 MM**

GRADING RESULTS

Carat Weight **3.37 CARATS**

Color Grade **FANCY VIVID BLUE**

Clarity Grade **VS 2**

Cut Grade **EXCELLENT**

ADDITIONAL GRADING INFORMATION

Polish **EXCELLENT**

Symmetry **EXCELLENT**

Fluorescence **NONE**

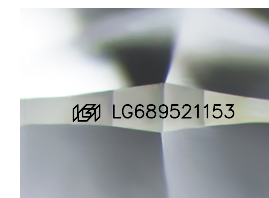
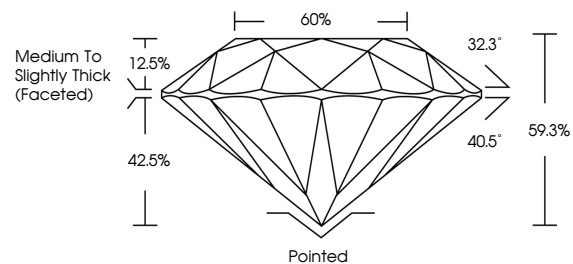
Inscription(s) **LG689521153**

Comments: This Laboratory Grown Diamond was created by Chemical Vapor Deposition (CVD) growth process.

Indications of post-growth treatment.

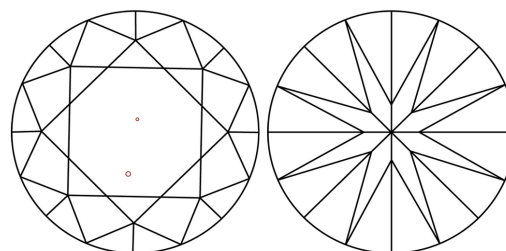
Secondary color: Green

PROPORTIONS



Sample Image Used

CLARITY CHARACTERISTICS



KEY TO SYMBOLS

Red symbols indicate internal characteristics.
Green symbols indicate external characteristics.

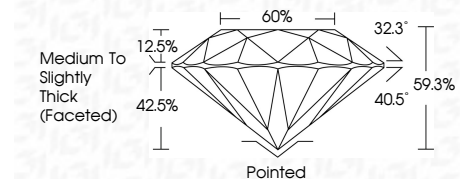
COLOR

D E F G H I J Faint Very Light Light

CLARITY

IF VS¹⁻² VS¹⁻² SI¹⁻² I¹⁻³

Internally Flawless Very Very Slightly Included Very Slightly Included Slightly Included Included



ADDITIONAL GRADING INFORMATION

Polish **EXCELLENT**

Symmetry **EXCELLENT**

Fluorescence **NONE**

Inscription(s) **LG689521153**

Comments: This Laboratory Grown Diamond was created by Chemical Vapor Deposition (CVD) growth process.

Indications of post-growth treatment.

Secondary color: Green



IGI



March 18, 2025
IGI Report No **LG689521153**
ROUND BRILLIANT
9.71 - 9.79 X 5.77 MM
Carat Weight **3.37 CARATS**
Color Grade **FANCY VIVID BLUE**
Clarity Grade **VS 2**
Cut Grade **EXCELLENT**
Depth **59.3%**
Table **60%**
Girdle **Medium To Slightly Thick (Faceted)**
Culet **Pointed**
Polish **EXCELLENT**
Symmetry **EXCELLENT**
Fluorescence **NONE**
Inscriptions(s) **LG689521153**
Comments: This Laboratory Grown Diamond was created by Chemical Vapor Deposition (CVD) growth process. Indications of post-growth treatment. Secondary color: Green