



ELECTRONIC COPY

LG689516056
Report verification at igi.org



March 21, 2025
IGI Report Number **LG689516056**
Description **LABORATORY GROWN DIAMOND**
Shape and Cutting Style **CUSHION MODIFIED BRILLIANT**
Measurements **8.54 X 6.89 X 4.56 MM**
GRADING RESULTS
Carat Weight **2.46 CARATS**
Color Grade **FANCY INTENSE BROWN PINK**
Clarity Grade **VS 1**

LABORATORY GROWN DIAMOND REPORT

March 21, 2025
IGI Report Number **LG689516056**
Description **LABORATORY GROWN DIAMOND**
Shape and Cutting Style **CUSHION MODIFIED BRILLIANT**
Measurements **8.54 X 6.89 X 4.56 MM**

GRADING RESULTS

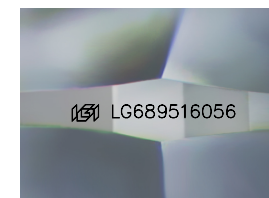
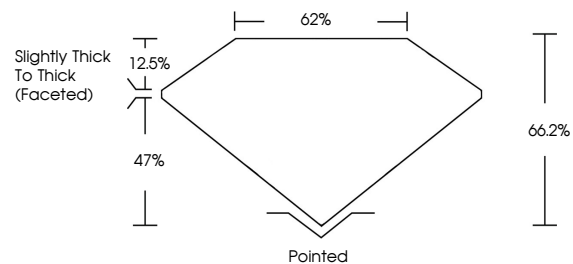
Carat Weight **2.46 CARATS**
Color Grade **FANCY INTENSE BROWN PINK**
Clarity Grade **VS 1**

ADDITIONAL GRADING INFORMATION

Polish **EXCELLENT**
Symmetry **EXCELLENT**
Fluorescence **SLIGHT**
Inscription(s) **LG689516056**

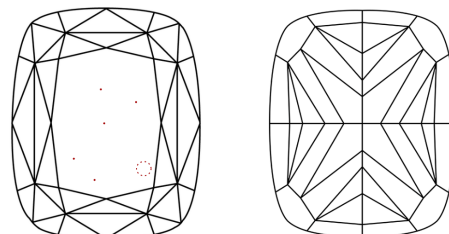
Comments: This Laboratory Grown Diamond was created by Chemical Vapor Deposition (CVD) growth process.
Indications of post-growth treatment.

PROPORTIONS



Sample Image Used

CLARITY CHARACTERISTICS



KEY TO SYMBOLS

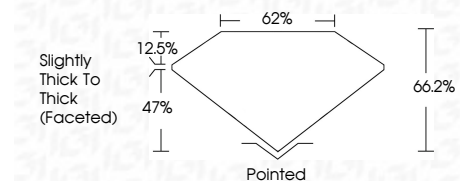
Red symbols indicate internal characteristics.
Green symbols indicate external characteristics.

COLOR

D E F G H I J Faint Very Light Light

CLARITY

IF	VS ¹⁻²	VS ¹⁻²	SI ¹⁻²	I ¹⁻³
Internally Flawless	Very Very Slightly Included	Very Slightly Included	Slightly Included	Included



ADDITIONAL GRADING INFORMATION

Polish **EXCELLENT**
Symmetry **EXCELLENT**
Fluorescence **SLIGHT**
Inscription(s) **LG689516056**
Comments: This Laboratory Grown Diamond was created by Chemical Vapor Deposition (CVD) growth process.
Indications of post-growth treatment.



March 21, 2025
IGI Report No **LG689516056**
CUSHION MODIFIED BRILLIANT
8.54 X 6.89 X 4.56 MM
Carat Weight **2.46 CARATS**
Color Grade **FANCY INTENSE BROWN PINK**
Clarity Grade **VS 1**
Depth **66.2%**
Table **62%**
Girdle **Slightly Thick To Thick (Faceted)**
Culet **Pointed**
Polish **EXCELLENT**
Symmetry **EXCELLENT**
Fluorescence **SLIGHT**
Inscription(s) **LG689516056**
Comments: This Laboratory Grown Diamond was created by Chemical Vapor Deposition (CVD) growth process.
Indications of post-growth treatment.