



**ELECTRONIC COPY**

LG689501550  
Report verification at igi.org



March 11, 2025  
IGI Report Number **LG689501550**  
Description **LABORATORY GROWN DIAMOND**  
Shape and Cutting Style **MODIFIED RECTANGULAR  
CUSHION STEP CUT**  
Measurements **9.33 X 6.86 X 4.32 MM**  
**GRADING RESULTS**  
Carat Weight **3.00 CARATS**  
Color Grade **D**  
Clarity Grade **VS 1**

March 11, 2025  
IGI Report Number **LG689501550**  
Description **LABORATORY GROWN DIAMOND**  
Shape and Cutting Style **MODIFIED RECTANGULAR  
CUSHION STEP CUT**  
Measurements **9.33 X 6.86 X 4.32 MM**

**GRADING RESULTS**

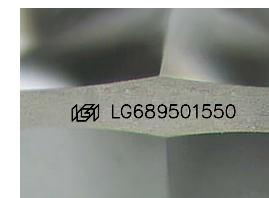
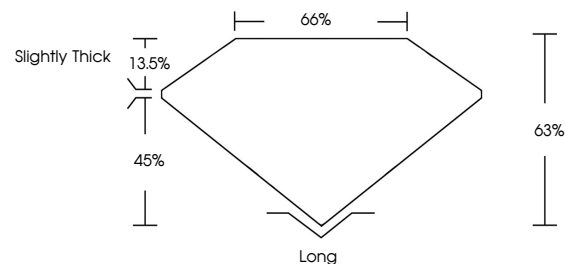
Carat Weight **3.00 CARATS**  
Color Grade **D**  
Clarity Grade **VS 1**

**ADDITIONAL GRADING INFORMATION**

Polish **EXCELLENT**  
Symmetry **EXCELLENT**  
Fluorescence **NONE**  
Inscription(s) **IGI LG689501550**

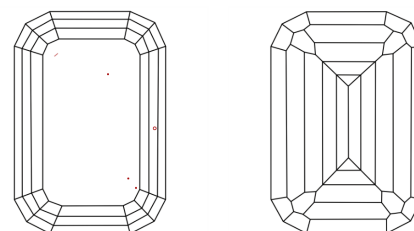
Comments: This Laboratory Grown Diamond was created by Chemical Vapor Deposition (CVD) growth process.  
Type IIa

**PROPORTIONS**



Sample Image Used

**CLARITY CHARACTERISTICS**



**KEY TO SYMBOLS**

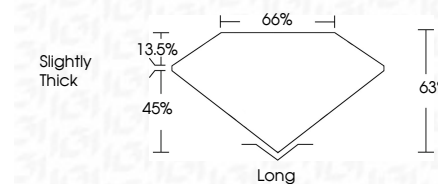
Red symbols indicate internal characteristics.  
Green symbols indicate external characteristics.

**COLOR**

D E F G H I J Faint Very Light Light

**CLARITY**

IF	VS <sup>1-2</sup>	VS <sup>1-2</sup>	SI <sup>1-2</sup>	I <sup>1-3</sup>
Internally Flawless	Very Very Slightly Included	Very Slightly Included	Slightly Included	Included



**ADDITIONAL GRADING INFORMATION**

Polish **EXCELLENT**  
Symmetry **EXCELLENT**  
Fluorescence **NONE**  
Inscription(s) **IGI LG689501550**  
Comments: This Laboratory Grown Diamond was created by Chemical Vapor Deposition (CVD) growth process.  
Type IIa



March 11, 2025  
IGI Report No **LG689501550**  
**MODIFIED RECTANGULAR CUSHION STEP CUT**  
**9.33 X 6.86 X 4.32 MM**  
Carat Weight **3.00 CARATS**  
Color Grade **D**  
Clarity Grade **VS 1**  
Depth **63%**  
Table **45%**  
Girdle **Slightly Thick**  
Culet **Long**  
Polish **EXCELLENT**  
Symmetry **EXCELLENT**  
Fluorescence **NONE**  
Inscription(s) **IGI LG689501550**

Comments: This Laboratory Grown Diamond was created by Chemical Vapor Deposition (CVD) growth process.  
Type IIa