



**ELECTRONIC COPY**

LG688519239  
Report verification at igi.org



March 18, 2025  
IGI Report Number **LG688519239**  
Description **LABORATORY GROWN DIAMOND**  
Shape and Cutting Style **CUSHION MODIFIED BRILLIANT**  
Measurements **6.82 X 5.28 X 3.31 MM**  
**GRADING RESULTS**  
Carat Weight **1.08 CARAT**  
Color Grade **FANCY VIVID PINK**  
Clarity Grade **VS 1**

**LABORATORY GROWN DIAMOND REPORT**

March 18, 2025  
IGI Report Number **LG688519239**  
Description **LABORATORY GROWN DIAMOND**  
Shape and Cutting Style **CUSHION MODIFIED BRILLIANT**  
Measurements **6.82 X 5.28 X 3.31 MM**

**GRADING RESULTS**

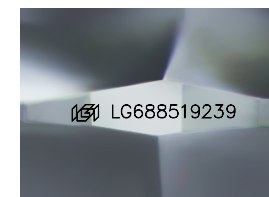
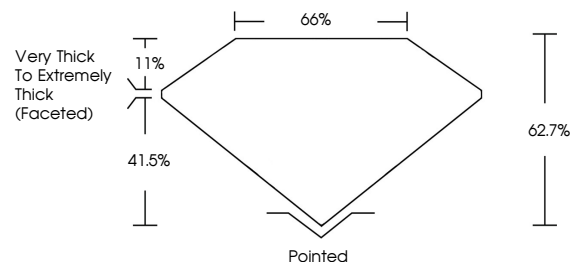
Carat Weight **1.08 CARAT**  
Color Grade **FANCY VIVID PINK**  
Clarity Grade **VS 1**

**ADDITIONAL GRADING INFORMATION**

Polish **EXCELLENT**  
Symmetry **EXCELLENT**  
Fluorescence **SLIGHT**  
Inscription(s) **LG688519239**

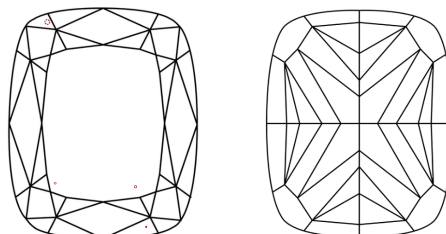
Comments: This Laboratory Grown Diamond was created by Chemical Vapor Deposition (CVD) growth process.  
Indications of post-growth treatment.

**PROPORTIONS**



Sample Image Used

**CLARITY CHARACTERISTICS**



**KEY TO SYMBOLS**

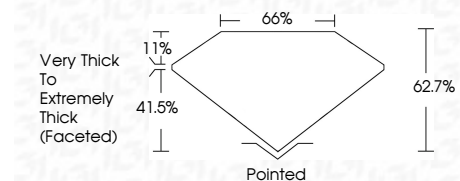
Red symbols indicate internal characteristics.  
Green symbols indicate external characteristics.

**COLOR**

D E F G H I J Faint Very Light Light

**CLARITY**

IF	VS <sup>1-2</sup>	VS <sup>1-2</sup>	SI <sup>1-2</sup>	I <sup>1-3</sup>
Internally Flawless	Very Very Slightly Included	Very Slightly Included	Slightly Included	Included



**ADDITIONAL GRADING INFORMATION**

Polish **EXCELLENT**  
Symmetry **EXCELLENT**  
Fluorescence **SLIGHT**  
Inscription(s) **LG688519239**  
Comments: This Laboratory Grown Diamond was created by Chemical Vapor Deposition (CVD) growth process.  
Indications of post-growth treatment.



March 18, 2025  
IGI Report No **LG688519239**  
**CUSHION MODIFIED BRILLIANT**  
6.82 X 5.28 X 3.31 MM  
1.08 CARAT  
FANCY VIVID PINK  
VS 1  
62.7%  
65%  
Very Thick to Extremely Thick (Faceted)  
Pointed  
EXCELLENT  
EXCELLENT  
SLIGHT  
IGI LG688519239  
Comments: This Laboratory Grown Diamond was created by Chemical Vapor Deposition (CVD) growth process.  
Indications of post-growth treatment.