



**ELECTRONIC COPY**

LG688517724  
Report verification at igi.org



March 3, 2025  
IGI Report Number **LG688517724**  
Description **LABORATORY GROWN DIAMOND**  
Shape and Cutting Style **KITE STEP CUT**  
Measurements **16.19 X 10.39 X 6.54 MM**  
**GRADING RESULTS**  
Carat Weight **5.21 CARATS**  
Color Grade **E**  
Clarity Grade **VS 1**

March 3, 2025  
IGI Report Number **LG688517724**  
Description **LABORATORY GROWN DIAMOND**  
Shape and Cutting Style **KITE STEP CUT**  
Measurements **16.19 X 10.39 X 6.54 MM**

**GRADING RESULTS**

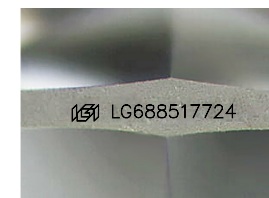
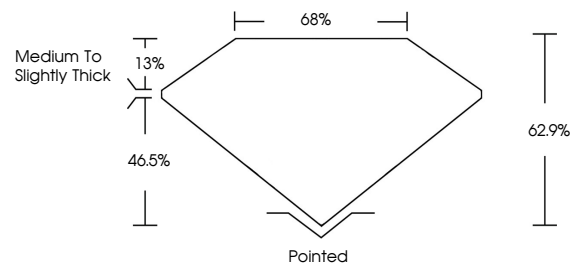
Carat Weight **5.21 CARATS**  
Color Grade **E**  
Clarity Grade **VS 1**

**ADDITIONAL GRADING INFORMATION**

Polish **EXCELLENT**  
Symmetry **EXCELLENT**  
Fluorescence **NONE**  
Inscription(s) **IGI LG688517724**

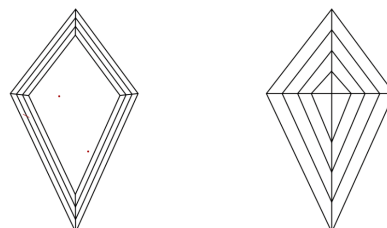
Comments: This Laboratory Grown Diamond was created by Chemical Vapor Deposition (CVD) growth process.  
Type IIa

**PROPORTIONS**



Sample Image Used

**CLARITY CHARACTERISTICS**



**KEY TO SYMBOLS**

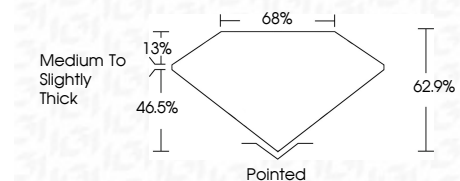
Red symbols indicate internal characteristics.  
Green symbols indicate external characteristics.

**COLOR**

D E F G H I J Faint Very Light Light

**CLARITY**

IF	VS <sup>1-2</sup>	VS <sup>1-2</sup>	SI <sup>1-2</sup>	I <sup>1-3</sup>
Internally Flawless	Very Very Slightly Included	Very Slightly Included	Slightly Included	Included



**ADDITIONAL GRADING INFORMATION**

Polish **EXCELLENT**  
Symmetry **EXCELLENT**  
Fluorescence **NONE**  
Inscription(s) **IGI LG688517724**  
Comments: This Laboratory Grown Diamond was created by Chemical Vapor Deposition (CVD) growth process.  
Type IIa



March 3, 2025  
IGI Report No. LG688517724  
KITE STEP CUT  
16.19 X 10.39 X 6.54 MM  
5.21 CARATS  
E  
VS 1  
62.9%  
65%  
Medium to Slightly Thick  
Pointed  
EXCELLENT  
EXCELLENT  
NONE  
IGI LG688517724  
Comments: This Laboratory Grown Diamond was created by Chemical Vapor Deposition (CVD) growth process.  
Type IIa