



ELECTRONIC COPY

LG688517361
Report verification at igi.org



March 23, 2025

IGI Report Number **LG688517361**

Description **LABORATORY GROWN DIAMOND**

Shape and Cutting Style **ROUND CORNERED
RECTANGULAR MODIFIED
BRILLIANT**

Measurements **8.87 X 5.76 X 3.53 MM**

GRADING RESULTS

Carat Weight **1.60 CARAT**

Color Grade **G**

Clarity Grade **VS 1**

LABORATORY GROWN DIAMOND REPORT

March 23, 2025

IGI Report Number **LG688517361**

Description **LABORATORY GROWN DIAMOND**

Shape and Cutting Style **ROUND CORNERED
RECTANGULAR MODIFIED
BRILLIANT**

Measurements **8.87 X 5.76 X 3.53 MM**

GRADING RESULTS

Carat Weight **1.60 CARAT**

Color Grade **G**

Clarity Grade **VS 1**

ADDITIONAL GRADING INFORMATION

Polish **EXCELLENT**

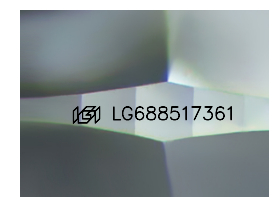
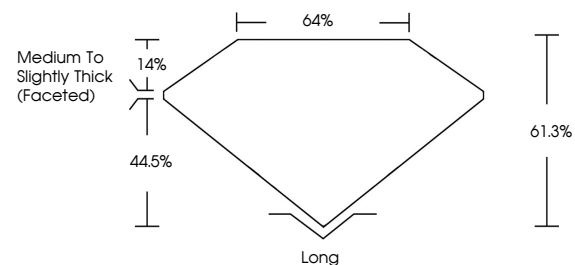
Symmetry **EXCELLENT**

Fluorescence **NONE**

Inscription(s) **IGI LG688517361**

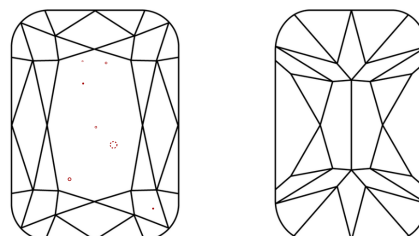
Comments: This Laboratory Grown Diamond was created by Chemical Vapor Deposition (CVD) growth process. Type IIa

PROPORTIONS



Sample Image Used

CLARITY CHARACTERISTICS



KEY TO SYMBOLS

Red symbols indicate internal characteristics.
Green symbols indicate external characteristics.

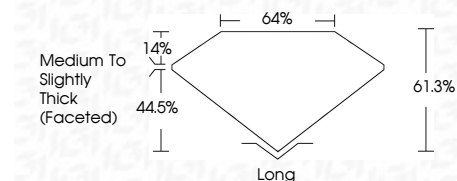
COLOR

D E F G H I J Faint Very Light Light

CLARITY

IF WS¹⁻² VS¹⁻² SI¹⁻² I¹⁻³

Internally Flawless Very Very Slightly Included Very Slightly Included Slightly Included Included



ADDITIONAL GRADING INFORMATION

Polish **EXCELLENT**

Symmetry **EXCELLENT**

Fluorescence **NONE**

Inscription(s) **IGI LG688517361**

Comments: This Laboratory Grown Diamond was created by Chemical Vapor Deposition (CVD) growth process. Type IIa



March 23, 2025
IGI Report No. LG688517361
**ROUND CORNERED RECT. MODIFIED
BRILLIANT**
8.87 X 5.76 X 3.53 MM
Carat Weight **1.60 CARAT**
Color Grade **G**
Clarity Grade **VS 1**
Depth **61.3%**
Table **14%**
Girdle **Medium to Slightly Thick (Faceted)**
Culet **Long**
Polish **EXCELLENT**
Symmetry **EXCELLENT**
Fluorescence **NONE**
Inscription(s) **IGI LG688517361**

Comments: This Laboratory Grown Diamond was created by Chemical Vapor Deposition (CVD) growth process. Type IIa