



ELECTRONIC COPY

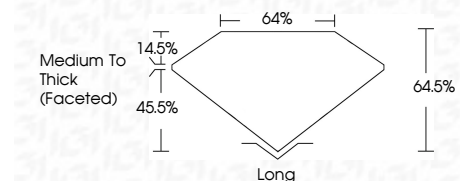
LG688517335
Report verification at igi.org



March 9, 2025
IGI Report Number **LG688517335**
Description **LABORATORY GROWN DIAMOND**
Shape and Cutting Style **ROUND CORNERED
RECTANGULAR MODIFIED
BRILLIANT**

Measurements **9.38 X 6.09 X 3.93 MM**

GRADING RESULTS
Carat Weight **2.06 CARATS**
Color Grade **G**
Clarity Grade **VS 1**



ADDITIONAL GRADING INFORMATION
Polish **EXCELLENT**
Symmetry **EXCELLENT**
Fluorescence **NONE**
Inscription(s) **IGI LG688517335**
Comments: This Laboratory Grown Diamond was created by Chemical Vapor Deposition (CVD) growth process. Type IIa



March 9, 2025
IGI Report No. LG688517335
**ROUND CORNERED RECT. MODIFIED
BRILLIANT**
9.38 X 6.09 X 3.93 MM
Carat Weight **2.06 CARATS**
Color Grade **G**
Clarity Grade **VS 1**
Depth **64.5%**
Table **45.5%**
Girdle **Medium To Thick (Faceted)**
Culet **Long**
Polish **EXCELLENT**
Symmetry **EXCELLENT**
Fluorescence **NONE**
Inscription(s) **IGI LG688517335**
Comments: This Laboratory Grown Diamond was created by Chemical Vapor Deposition (CVD) growth process. Type IIa

LABORATORY GROWN DIAMOND REPORT

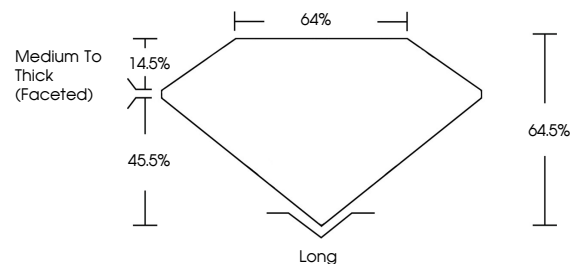
March 9, 2025
IGI Report Number **LG688517335**
Description **LABORATORY GROWN DIAMOND**
Shape and Cutting Style **ROUND CORNERED
RECTANGULAR MODIFIED
BRILLIANT**
Measurements **9.38 X 6.09 X 3.93 MM**

GRADING RESULTS
Carat Weight **2.06 CARATS**
Color Grade **G**
Clarity Grade **VS 1**

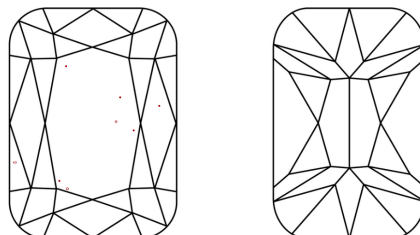
ADDITIONAL GRADING INFORMATION
Polish **EXCELLENT**
Symmetry **EXCELLENT**
Fluorescence **NONE**
Inscription(s) **IGI LG688517335**

Comments: This Laboratory Grown Diamond was created by Chemical Vapor Deposition (CVD) growth process. Type IIa

PROPORTIONS

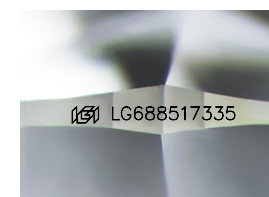


CLARITY CHARACTERISTICS



KEY TO SYMBOLS

Red symbols indicate internal characteristics.
Green symbols indicate external characteristics.



Sample Image Used

COLOR

D E F G H I J Faint Very Light Light

CLARITY

IF WS¹⁻² VS¹⁻² SI¹⁻² I¹⁻³

Internally Flawless Very Very Slightly Included Very Slightly Included Slightly Included Included

