



ELECTRONIC COPY

LABORATORY GROWN DIAMOND REPORT

| | |
|-------------------------|--------------------------|
| March 17, 2025 | |
| IGI Report Number | LG687594351 |
| Description | LABORATORY GROWN DIAMOND |
| Shape and Cutting Style | ROUND BRILLIANT |
| Measurements | 9.20 - 9.24 X 5.72 MM |

GRADING RESULTS

| | |
|---------------|------------------|
| Carat Weight | 3.01 CARATS |
| Color Grade | FANCY VIVID BLUE |
| Clarity Grade | VS 1 |
| Cut Grade | IDEAL |

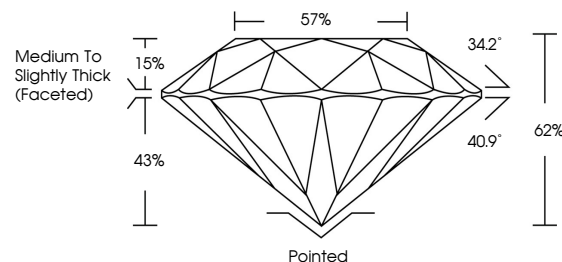
ADDITIONAL GRADING INFORMATION

| | |
|----------------|---|
| Polish | EXCELLENT |
| Symmetry | EXCELLENT |
| Fluorescence | NONE |
| Inscription(s) |  LG687594351 |

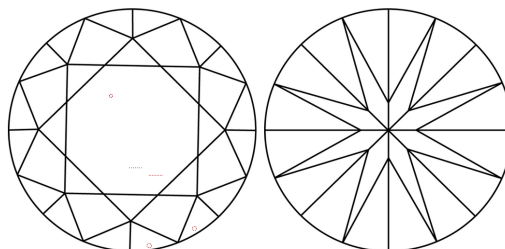
Comments: This Laboratory Grown Diamond was created by Chemical Vapor Deposition (CVD) growth process.
Indications of post-growth treatment.

LG687594351
Report verification at lgi.org

PROPORTIONS

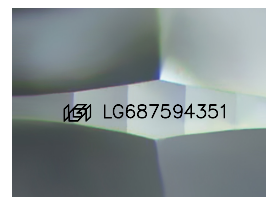


CLARITY CHARACTERISTICS



KEY TO SYMBOLS

Red symbols indicate internal characteristics.
Green symbols indicate external characteristics.



Sample Image Used

COLOR

D E F G H I J Faint Very Light Light

CLARITY

IF WS¹⁻² VS¹⁻² SI¹⁻² |¹⁻³

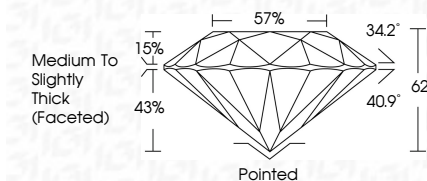
| | | | | |
|------------------------|--------------------------------|---------------------------|----------------------|----------|
| Internally Flawless | Very Very Slightly Included | Very Slightly Included | Slightly Included | Included |
|------------------------|--------------------------------|---------------------------|----------------------|----------|



| | |
|-------------------------|--------------------------|
| March 17, 2025 | |
| IGI Report Number | LG687594351 |
| Description | LABORATORY GROWN DIAMOND |
| Shape and Cutting Style | ROUND BRILLIANT |
| Measurements | 9.20 - 9.24 X 5.72 MM |

GRADING RESULTS

| | |
|---------------|------------------|
| Carat Weight | 3.01 CARATS |
| Color Grade | FANCY VIVID BLUE |
| Clarity Grade | VS 1 |
| Cut Grade | IDEAL |



ADDITIONAL GRADING INFORMATION

| | |
|----------------|--|
| Polish | EXCELLENT |
| Symmetry | EXCELLENT |
| Fluorescence | NONE |
| Inscription(s) |  LG-687594351 |

Comments: This Laboratory Grown Diamond was created by Chemical Vapor Deposition (CVD) growth process.
Indications of post-growth treatment.



© IGI 2020, International Gemological Institute

FD - 10 20

www.igi.org

THIS DOCUMENT WAS PRODUCED WITH THE FOLLOWING SECURITY MEASURES: SPECIAL DOCUMENT PAPER, INK SCREENS, WATERMARK BACKGROUND DESIGNS, HOLOGRAM AND OTHER SECURITY FEATURES NOT LISTED AND DO EXCEED DOCUMENT SECURITY INDUSTRY GUIDELINES

March 17, 2025
GI Report No LG687594351
ROUND BRILLIANT

9.20 - 9.24 X 5.72 MM
Carat Weight 3.01 CARATS
Color Grade FANCY VIVID BLUE

| | VS 1 | IDEAL | 62% | 57% | Medium To Slightly Tinted (Created) |
|---------------|------|-------|-----|-----|--|
| Clarity Grade | | | | | |
| Cut Grade | | | | | |
| Depth | | | | | |
| Table | | | | | |
| Girdle | | | | | |

| Pointed EXCELLENT EXCELLENT NONE | Pointed EXCELLENT EXCELLENT NONE |
|---|---|
| Culet | |
| Polish | |
| Symmetry | |
| Fluorescence | |

Comments:
This Laboratory Grown Diamond was created by Chemical Vapor Deposition (CVD) growth process.