

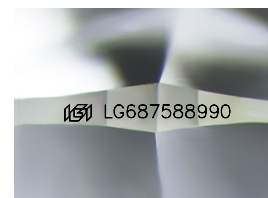
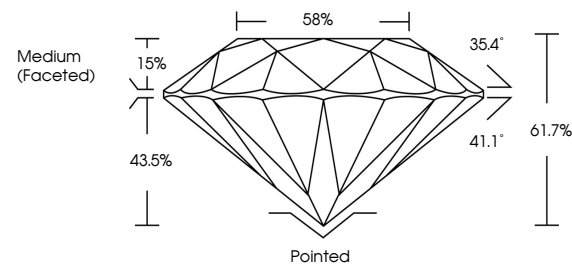


ELECTRONIC COPY

LABORATORY GROWN DIAMOND REPORT

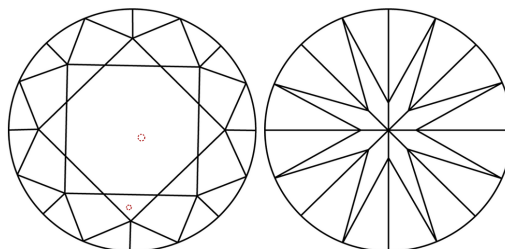
LG687588990
Report verification at igi.org

PROPORTIONS



Sample Image Used

CLARITY CHARACTERISTICS



KEY TO SYMBOLS

Red symbols indicate internal characteristics.
Green symbols indicate external characteristics.

COLOR

D E F G H I J Faint Very Light Light

CLARITY

IF VS¹⁻² VS¹⁻² S¹⁻² |¹⁻³

Internally Flawless	Very Very Slightly Included	Very Slightly Included	Slightly Included	Included
------------------------	--------------------------------	---------------------------	----------------------	----------

LABORATORY GROWN DIAMOND REPORT



March 1, 2025

IGI Report Number **LG687588990**

Description **LABORATORY GROWN DIAMOND**Shape and Cutting Style **ROUND BRILLIANT**

Measurements 6.62 - 6.64 X 4.09 MM

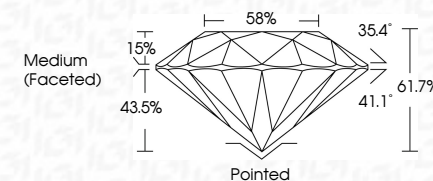
GRADING RESULTS

Carat Weight **1.10 CARAT**

Color Grade	D
-------------	---

Clarity Grade VS 2

Cut Grade **IDEAL**



ADDITIONAL GRADING INFORMATION

Polish **EXCELLENT**Symmetry **EXCELLENT**Fluorescence **NONE**Inscription(s) LG687588990

Comments: This Laboratory Grown Diamond was created by Chemical Vapor Deposition (CVD) growth process.
Type IIa



© IGI 2020, International Gemological Institute

FD - 10 20



THIS DOCUMENT WAS PRODUCED WITH THE FOLLOWING SECURITY MEASURES: SPECIAL DOCUMENT PAPER, INK SCREENS, WATERMARK, BACKGROUND DESIGNS, HOLOGRAM, AND OTHER SECURITY FEATURES NOT LISTED AND DO EXCEED DOCUMENT SECURITY INDUSTRY GUIDELINES.

www.igi.org

March 1, 2025	Color Weight	Carat	Polished
GI Report No. LG68758990	Color Grade	D	EXCELLENT
ROUND BRILLIANT		VS 2	EXCELLENT
LG62 - 6.64 X 4.09 MM	Clarity Grade	IDEAL	NONE
	Clarity Grade	61.7%	(#6) LG68758990
	Depth	58%	
	Table	Medium (faced)	
	Girdle		
	Culet		
	Polish		
	Symmetry		
	Fluorescence		
	Inscriptions(s)		
	Comments:		
	This Laboratory Grown Diamond was		
	created by Chemical Vapor Deposition		
	(CVD) growth process.		
	Type IIA		