



ELECTRONIC COPY

LG687586746
Report verification at igi.org



March 7, 2025
IGI Report Number **LG687586746**
Description **LABORATORY GROWN DIAMOND**
Shape and Cutting Style **KITE STEP CUT**
Measurements **17.92 X 11.52 X 7.10 MM**
GRADING RESULTS
Carat Weight **7.45 CARATS**
Color Grade **E**
Clarity Grade **VVS 2**

LABORATORY GROWN DIAMOND REPORT

March 7, 2025
IGI Report Number **LG687586746**
Description **LABORATORY GROWN DIAMOND**
Shape and Cutting Style **KITE STEP CUT**
Measurements **17.92 X 11.52 X 7.10 MM**

GRADING RESULTS

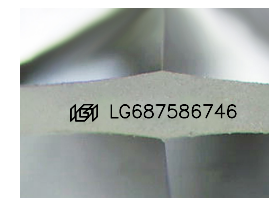
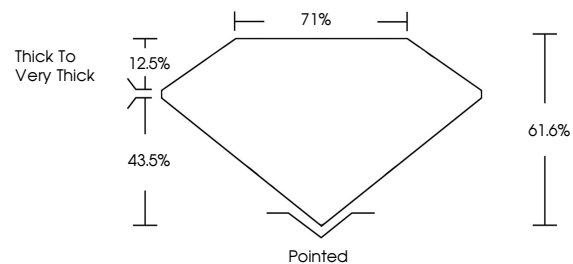
Carat Weight **7.45 CARATS**
Color Grade **E**
Clarity Grade **VVS 2**

ADDITIONAL GRADING INFORMATION

Polish **EXCELLENT**
Symmetry **EXCELLENT**
Fluorescence **NONE**
Inscription(s) **IGI LG687586746**

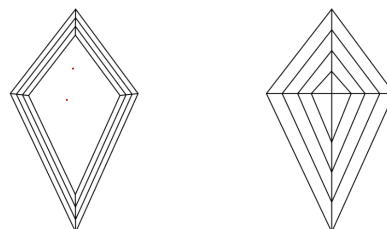
Comments: This Laboratory Grown Diamond was created by Chemical Vapor Deposition (CVD) growth process.
Type IIa

PROPORTIONS



Sample Image Used

CLARITY CHARACTERISTICS



KEY TO SYMBOLS

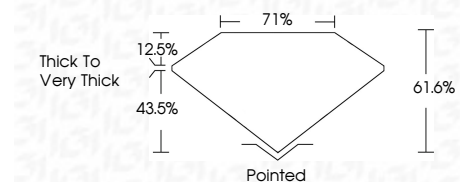
Red symbols indicate internal characteristics.
Green symbols indicate external characteristics.

COLOR

D E F G H I J Faint Very Light Light

CLARITY

IF	VS ¹⁻²	VVS ¹⁻²	S ¹⁻²	I ¹⁻³
Internally Flawless	Very Very Slightly Included	Very Slightly Included	Slightly Included	Included



ADDITIONAL GRADING INFORMATION

Polish **EXCELLENT**
Symmetry **EXCELLENT**
Fluorescence **NONE**
Inscription(s) **IGI LG687586746**
Comments: This Laboratory Grown Diamond was created by Chemical Vapor Deposition (CVD) growth process.
Type IIa



March 7, 2025
IGI Report No. **LG687586746**
KITE STEP CUT
17.92 X 11.52 X 7.10 MM
7.45 CARATS
E
VVS 2
61.6%
71%
Thick to Very Thick
Pointed
EXCELLENT
EXCELLENT
NONE
IGI LG687586746
Comments: This Laboratory Grown Diamond was created by Chemical Vapor Deposition (CVD) growth process.
Type IIa