

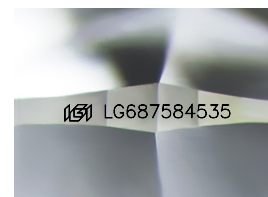
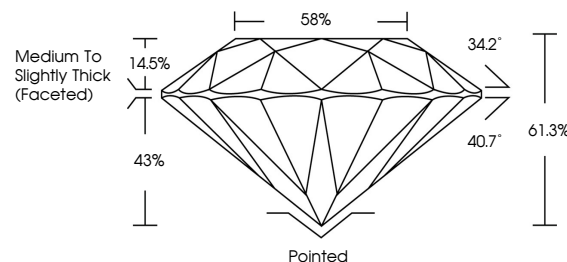


ELECTRONIC COPY

LABORATORY GROWN DIAMOND REPORT

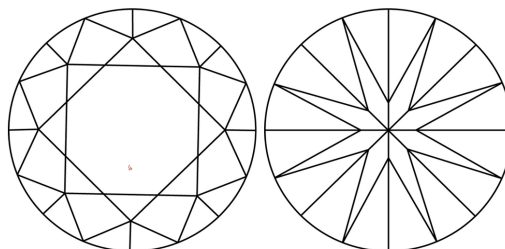
LG687584535
Report verification at lgi.org

PROPORTIONS



Sample Image Used

CLARITY CHARACTERISTICS



KEY TO SYMBOLS

Red symbols indicate internal characteristics.
Green symbols indicate external characteristics.

COLOR

D E F G H I J Faint Very Light Light

CLARITY

IF WS¹⁻² VS¹⁻² SI¹⁻² |¹⁻³

Internally Flawless	Very Very Slightly Included	Very Slightly Included	Slightly Included	Included
------------------------	--------------------------------	---------------------------	----------------------	----------



March 5, 2025

IGI Report Number **LG687584535**Description **LABORATORY GROWN DIAMOND**Shape and Cutting Style **ROUND BRILLIANT**

Measurements 12.03 - 12.08 X 7.38 MM

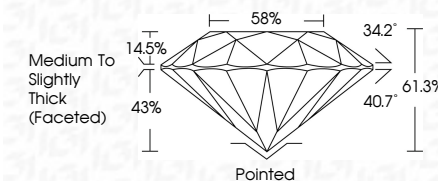
GRADING RESULTS

Carat Weight **6.63 CARATS**

Color Grade E

Clarity Grade VS 1

Cut Grade **IDEAL**



ADDITIONAL GRADING INFORMATION

Polish EXCELLENT

Symmetry **EXCELLENT**Fluorescence NONIInscription(s) LG687584535

Comments: This Laboratory Grown Diamond was created by Chemical Vapor Deposition (CVD) growth process.

Type IIa



© IGI 2020, International Gemological Institute

FD - 10 20

www.igi.org



THIS DOCUMENT WAS PRODUCED WITH THE FOLLOWING SECURITY MEASURES: SPECIAL DOCUMENT PAPER, INK SCREENS, WATERMARK, BACKGROUND DESIGNS, HOLOGRAM AND OTHER SECURITY FEATURES NOT LISTED AND DO EXCEED DOCUMENT SECURITY INDUSTRY GUIDELINE

March 5, 2025	GI Report No LG48758435	
ROUND BRILLIANT		
121023 - 12.08 X 7.38 MM		
Carat Weight	6.63 CARATS	
Color Grade	E	
Clarity Grade	Vs1	
Cut Grade	IDEAL	
Depth	61.3%	
Table	59%	
Girdle	Medium to Slightly Thick (Faceted)	
Color	Ported	
Polish	EXCELLENT	
Symmetry	EXCELLENT	
Fluorescence	NONE	
Inscription(s)	169 LG48758435	
Comments:		
	Reported as Crown Diamond was created by Chemical Vapor Deposition (CVD) growth process.	
	Type IIa	