

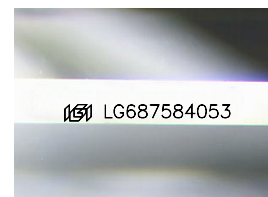
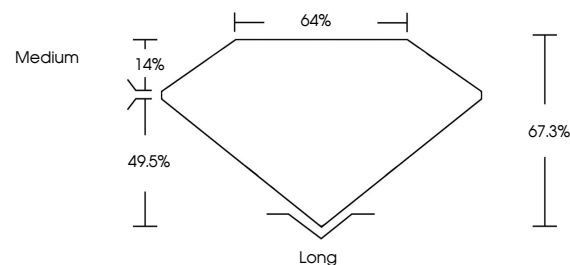


ELECTRONIC COPY

LABORATORY GROWN DIAMOND REPORT

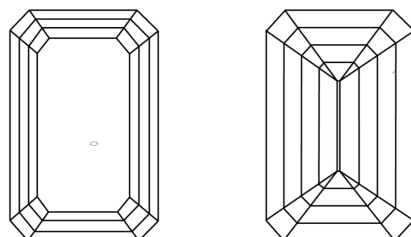
LG687584053
Report verification at igi.org

PROPORTIONS



Sample Image Used

CLARITY CHARACTERISTICS



KEY TO SYMBOLS

Red symbols indicate internal characteristics.
Green symbols indicate external characteristics.

COLOR

D E F G H I J Faint Very Light Light

CLARITY

IF	VS ¹⁻²	VS ¹⁻²	SI ¹⁻²	I ¹⁻³
Internally Flawless	Very Very Slightly Included	Very Slightly Included	Slightly Included	Included

LABORATORY GROWN DIAMOND REPORT



March 3, 2025

IGI Report Number **LG687584053**

Description **LABORATORY GROWN DIAMOND**

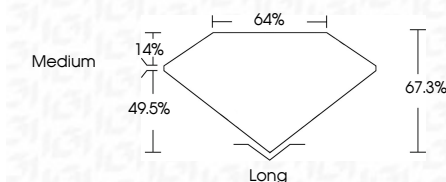
Shape and Cutting Style **EMERALD CUT**

Measurements 7.02 X 4.68 X 3.15 MM

GRADING RESULTS

Carat Weight **1.04 CARAT**

Color Grade E

Clarity Grade **VVS 2**

ADDITIONAL GRADING INFORMATION

Polish **EXCELLENCE**Symmetry **EXCELLENCE**

Fluorescence NONI

Inscription(s) LG68758405

Comments: This Laboratory Grown Diamond was created by Chemical Vapor Deposition (CVD) growth process.
Type IIa



www.igi.org

© IGI 2020, International Gemological Institute

FD - 10 20



THIS DOCUMENT WAS PRODUCED WITH THE FOLLOWING SECURITY MEASURES: SPECIAL DOCUMENT PAPER, INK SCREENS, WATERMARK BACKGROUND DESIGNS, HOLOGRAM, AND OTHER SECURITY FEATURES NOT LISTED AND DO EXCEED DOCUMENT SECURITY INDUSTRY GUIDELINES

March 3, 2025
 GFI Report No LG687584053

<p> GI Report No. ICG67594063 REBARND CUT 02 x 4.68 x 3.15 MM </p>	<p> 1.04 CARAT E VVS 2 67.3% 64% Medium Long EXCELLENT EXCELLENT NONE None ICG67594063 </p>
---	--

Comments:
This Laboratory Grown Diamond was
created by Chemical Vapor Deposition
(CVD) growth process.