



**ELECTRONIC COPY**

LG687583222  
Report verification at igi.org



March 5, 2025  
IGI Report Number **LG687583222**  
Description **LABORATORY GROWN DIAMOND**  
Shape and Cutting Style **CUT CORNERED  
RECTANGULAR MIXED CUT**  
Measurements **9.99 X 6.91 X 4.30 MM**  
**GRADING RESULTS**  
Carat Weight **3.19 CARATS**  
Color Grade **E**  
Clarity Grade **VS 1**

March 5, 2025  
IGI Report Number **LG687583222**  
Description **LABORATORY GROWN DIAMOND**  
Shape and Cutting Style **CUT CORNERED RECTANGULAR  
MIXED CUT**  
Measurements **9.99 X 6.91 X 4.30 MM**

**GRADING RESULTS**

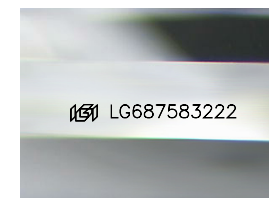
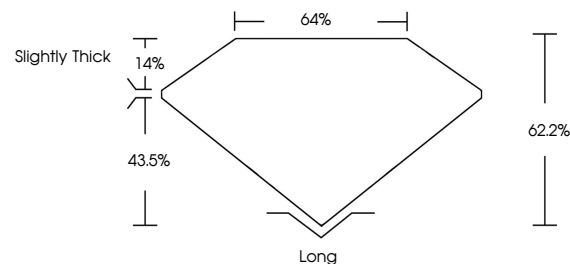
Carat Weight **3.19 CARATS**  
Color Grade **E**  
Clarity Grade **VS 1**

**ADDITIONAL GRADING INFORMATION**

Polish **EXCELLENT**  
Symmetry **EXCELLENT**  
Fluorescence **NONE**  
Inscription(s) **IGI LG687583222**

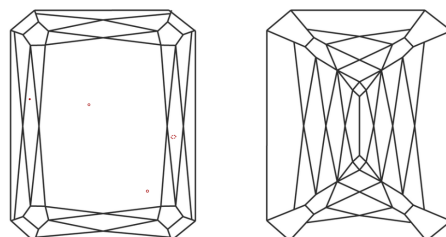
Comments: This Laboratory Grown Diamond was created by Chemical Vapor Deposition (CVD) growth process.  
Type IIa

**PROPORTIONS**



Sample Image Used

**CLARITY CHARACTERISTICS**



**KEY TO SYMBOLS**

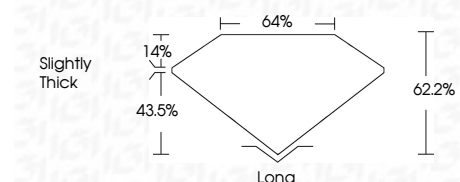
Red symbols indicate internal characteristics.  
Green symbols indicate external characteristics.

**COLOR**

D E F G H I J Faint Very Light Light

**CLARITY**

IF	VS <sup>1-2</sup>	VS <sup>1-2</sup>	SI <sup>1-2</sup>	I <sup>1-3</sup>
Internally Flawless	Very Very Slightly Included	Very Slightly Included	Slightly Included	Included



**ADDITIONAL GRADING INFORMATION**

Polish **EXCELLENT**  
Symmetry **EXCELLENT**  
Fluorescence **NONE**  
Inscription(s) **IGI LG687583222**  
Comments: This Laboratory Grown Diamond was created by Chemical Vapor Deposition (CVD) growth process.  
Type IIa



March 5, 2025  
IGI Report No. **LG687583222**  
**CUT CORNERED RECT. MIXED CUT**  
**3.19 CARATS**  
E  
Carat Weight  
Color Grade  
Clarity Grade  
Depth  
Table  
Girdle  
Slightly Thick  
Long  
Culet  
Polish  
Symmetry  
Fluorescence  
Inscription(s)  
**EXCELLENT**  
**EXCELLENT**  
**NONE**  
**IGI LG687583222**  
Comments: This Laboratory Grown Diamond was created by Chemical Vapor Deposition (CVD) growth process.  
Type IIa