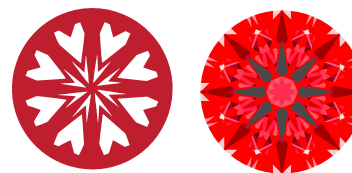




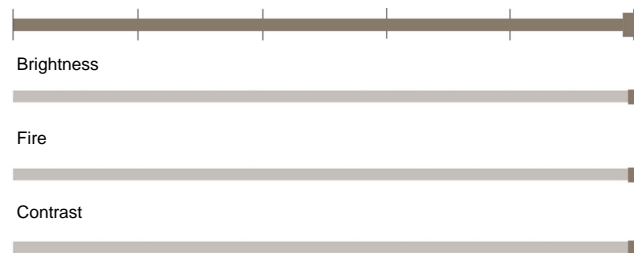
**Light Performance Grade: Exceptional**



**Ideal-Scope representation**

Low Moderate High Superior Exceptional

**Light Performance**



**COLOR**

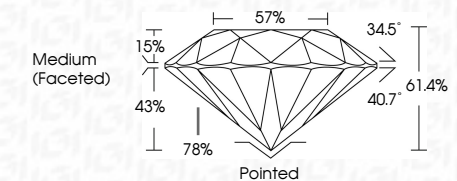
D E F G H I J Faint Very Light Light

**CLARITY**

IF	VS 1-2	VS 1-2	SI 1-2	I 1-3
Internally Flawless	Very Very Slightly Included	Very Slightly Included	Slightly Included	Included



March 4, 2025  
IGI Report Number **LG687579068**  
Description **LABORATORY GROWN DIAMOND**  
Shape and Cutting Style **ROUND BRILLIANT**  
Measurements **11.13 - 11.20 X 6.85 MM**  
**GRADING RESULTS**  
Carat Weight **5.24 CARATS**  
Color Grade **D**  
Clarity Grade **VVS 2**  
Cut Grade **IDEAL**



**ADDITIONAL GRADING INFORMATION**  
Polish **EXCELLENT**  
Symmetry **EXCELLENT**  
Fluorescence **NONE**  
Inscription(s) **IGI LG687579068**  
Comments: HEARTS & ARROWS  
This Laboratory Grown Diamond was created by Chemical Vapor Deposition (CVD) growth process. Type IIa

**ELECTRONIC COPY**

**LABORATORY GROWN DIAMOND REPORT**

March 4, 2025  
IGI Report Number **LG687579068**  
Description **LABORATORY GROWN DIAMOND**  
Shape and Cutting Style **ROUND BRILLIANT**  
Measurements **11.13 - 11.20 x 6.85 mm**

**GRADING RESULTS**

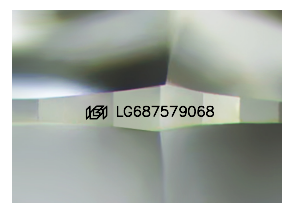
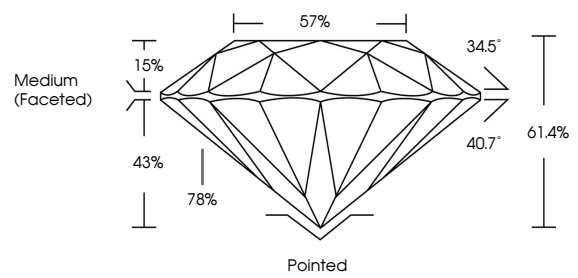
Carat Weight **5.24 CARATS**  
Color Grade **D**  
Clarity Grade **VVS 2**  
Cut Grade **IDEAL**

**ADDITIONAL GRADING INFORMATION**

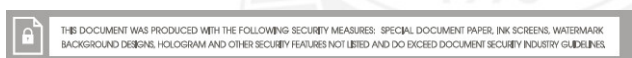
Polish **EXCELLENT**  
Symmetry **EXCELLENT**  
Fluorescence **NONE**  
Inscription(s) **IGI LG687579068**

Comments: HEARTS & ARROWS  
This Laboratory Grown Diamond was created by Chemical Vapor Deposition (CVD) growth process. Type IIa

**PROPORTIONS**



Sample Image Used



**IGI**

March 4, 2025  
IGI Report No. **LG687579068**  
**ROUND BRILLIANT**  
11.13 - 11.20 X 6.85 MM  
5.24 CARATS  
D  
VVS 2  
IDEAL  
6.14%  
57%  
Medium (Faceted)  
Pointed  
EXCELLENT  
EXCELLENT  
NONE  
IGI LG687579068  
Comments:  
HEARTS & ARROWS  
This Laboratory Grown Diamond was created by Chemical Vapor Deposition (CVD) growth process. Type IIa