



ELECTRONIC COPY

LG687572675
Report verification at igi.org



March 18, 2025
IGI Report Number **LG687572675**
Description **LABORATORY GROWN DIAMOND**
Shape and Cutting Style **CUSHION MODIFIED BRILLIANT**
Measurements **13.63 X 9.84 X 5.87 MM**
GRADING RESULTS
Carat Weight **6.05 CARATS**
Color Grade **FANCY VIVID ORANGY YELLOW**
Clarity Grade **VS 2**

LABORATORY GROWN DIAMOND REPORT

March 18, 2025
IGI Report Number **LG687572675**
Description **LABORATORY GROWN DIAMOND**
Shape and Cutting Style **CUSHION MODIFIED BRILLIANT**
Measurements **13.63 X 9.84 X 5.87 MM**

GRADING RESULTS

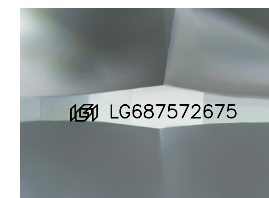
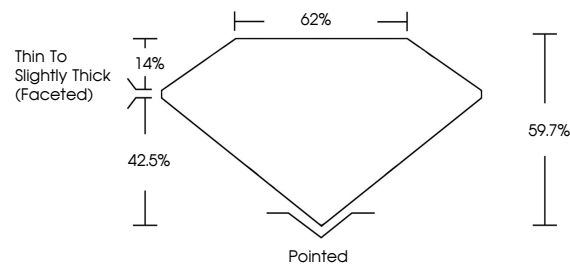
Carat Weight **6.05 CARATS**
Color Grade **FANCY VIVID ORANGY YELLOW**
Clarity Grade **VS 2**

ADDITIONAL GRADING INFORMATION

Polish **EXCELLENT**
Symmetry **EXCELLENT**
Fluorescence **SLIGHT**
Inscription(s) **IGI LG687572675**

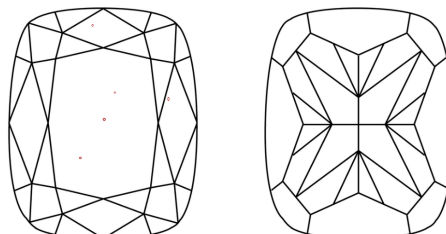
Comments: This Laboratory Grown Diamond was created by Chemical Vapor Deposition (CVD) growth process.
Indications of post-growth treatment.

PROPORTIONS



Sample Image Used

CLARITY CHARACTERISTICS



KEY TO SYMBOLS

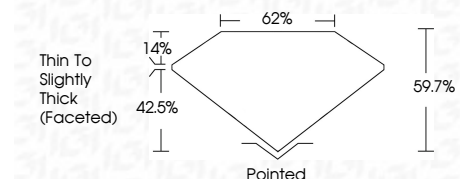
Red symbols indicate internal characteristics.
Green symbols indicate external characteristics.

COLOR

D E F G H I J Faint Very Light Light

CLARITY

IF	VS ¹⁻²	VS ¹⁻²	SI ¹⁻²	I ¹⁻³
Internally Flawless	Very Very Slightly Included	Very Slightly Included	Slightly Included	Included



ADDITIONAL GRADING INFORMATION

Polish **EXCELLENT**
Symmetry **EXCELLENT**
Fluorescence **SLIGHT**
Inscription(s) **IGI LG687572675**
Comments: This Laboratory Grown Diamond was created by Chemical Vapor Deposition (CVD) growth process.
Indications of post-growth treatment.



March 18, 2025
IGI Report No **LG687572675**
CUSHION MODIFIED BRILLIANT
6.05 CARATS
Carat Weight **FANCY VIVID ORANGY YELLOW**
Color Grade **VS 2**
Clarity Grade **VS 2**
Depth **59.7%**
Table **14%**
Girdle **Thin to Slightly Thick (Faceted)**
Culet **Pointed**
Polish **EXCELLENT**
Symmetry **EXCELLENT**
Fluorescence **SLIGHT**
Inscription(s) **IGI LG687572675**
Comments: This Laboratory Grown Diamond was created by Chemical Vapor Deposition (CVD) growth process.
Indications of post-growth treatment.