



**ELECTRONIC COPY**

LG687570283  
Report verification at igi.org



March 15, 2025  
IGI Report Number **LG687570283**  
Description **LABORATORY GROWN DIAMOND**  
Shape and Cutting Style **ROUND BRILLIANT**  
Measurements **12.14 - 12.21 X 7.46 MM**  
**GRADING RESULTS**  
Carat Weight **7.03 CARATS**  
Color Grade **FANCY PINK**  
Clarity Grade **VS 1**  
Cut Grade **EXCELLENT**

March 15, 2025  
IGI Report Number **LG687570283**  
Description **LABORATORY GROWN DIAMOND**  
Shape and Cutting Style **ROUND BRILLIANT**  
Measurements **12.14 - 12.21 X 7.46 MM**

**GRADING RESULTS**

Carat Weight **7.03 CARATS**  
Color Grade **FANCY PINK**  
Clarity Grade **VS 1**  
Cut Grade **EXCELLENT**

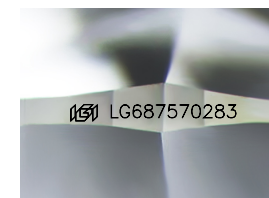
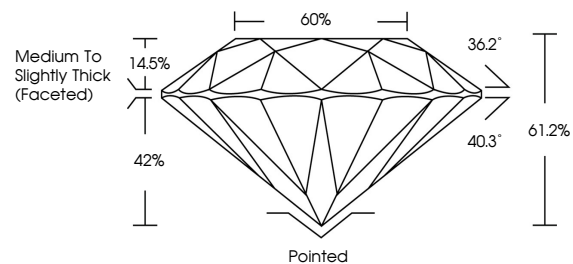
**ADDITIONAL GRADING INFORMATION**

Polish **VERY GOOD**  
Symmetry **EXCELLENT**  
Fluorescence **SLIGHT**  
Inscription(s) **LG687570283**

Comments: This Laboratory Grown Diamond was created by Chemical Vapor Deposition (CVD) growth process.  
Indications of post-growth treatment.

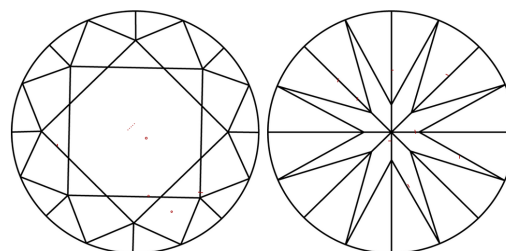
Secondary color: Orange

**PROPORTIONS**



Sample Image Used

**CLARITY CHARACTERISTICS**



**KEY TO SYMBOLS**

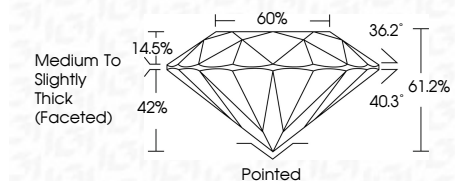
Red symbols indicate internal characteristics.  
Green symbols indicate external characteristics.

**COLOR**

D E F G H I J Faint Very Light Light

**CLARITY**

IF	VS <sup>1-2</sup>	VS <sup>1-2</sup>	SI <sup>1-2</sup>	I <sup>1-3</sup>
Internally Flawless	Very Very Slightly Included	Very Slightly Included	Slightly Included	Included



**ADDITIONAL GRADING INFORMATION**

Polish **VERY GOOD**  
Symmetry **EXCELLENT**  
Fluorescence **SLIGHT**  
Inscription(s) **LG687570283**  
Comments: This Laboratory Grown Diamond was created by Chemical Vapor Deposition (CVD) growth process.  
Indications of post-growth treatment.  
Secondary color: Orange



March 15, 2025  
IGI Report No **LG687570283**  
**ROUND BRILLIANT**  
**12.14 - 12.21 X 7.46 MM**  
Carat Weight **7.03 CARATS**  
Color Grade **FANCY PINK**  
Clarity Grade **VS 1**  
Depth **EXCELLENT**  
Table **61.2%**  
Girdle **60%**  
Medium To Slightly Thick (Faceted)  
Culet **Pointed**  
Polish **VERY GOOD**  
Symmetry **EXCELLENT**  
Fluorescence **SLIGHT**  
Inscriptions(s) **LG687570283**  
Comments: This Laboratory Grown Diamond was created by Chemical Vapor Deposition (CVD) growth process.  
Indications of post-growth treatment.  
Secondary color: Orange