



ELECTRONIC COPY

LG687562711
Report verification at igi.org



March 5, 2025

IGI Report Number **LG687562711**

Description **LABORATORY GROWN DIAMOND**

Shape and Cutting Style **ROUND BRILLIANT**

Measurements **8.19 - 8.28 X 4.89 MM**

GRADING RESULTS

Carat Weight **2.00 CARATS**

Color Grade **F**

Clarity Grade **VS 1**

Cut Grade **IDEAL**

March 5, 2025

IGI Report Number **LG687562711**

Description **LABORATORY GROWN DIAMOND**

Shape and Cutting Style **ROUND BRILLIANT**

Measurements **8.19 - 8.28 X 4.89 MM**

GRADING RESULTS

Carat Weight **2.00 CARATS**

Color Grade **F**

Clarity Grade **VS 1**

Cut Grade **IDEAL**

ADDITIONAL GRADING INFORMATION

Polish **EXCELLENT**

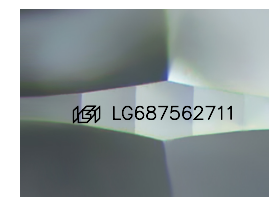
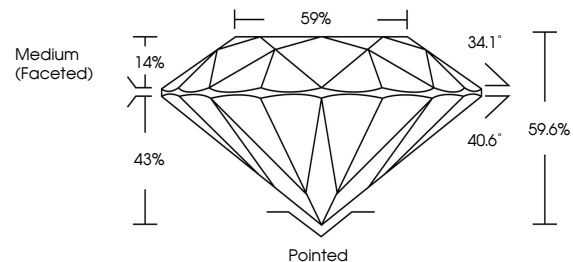
Symmetry **EXCELLENT**

Fluorescence **NONE**

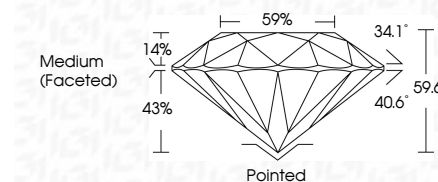
Inscription(s) **IGI LG687562711**

Comments: This Laboratory Grown Diamond was created by Chemical Vapor Deposition (CVD) growth process. Type IIa

PROPORTIONS



Sample Image Used



COLOR

D E F G H I J Faint Very Light Light

CLARITY

IF WS¹⁻² VS¹⁻² SI¹⁻² I¹⁻³

Internally Flawless Very Very Slightly Included Very Slightly Included Slightly Included Included

ADDITIONAL GRADING INFORMATION

Polish **EXCELLENT**

Symmetry **EXCELLENT**

Fluorescence **NONE**

Inscription(s) **IGI LG687562711**

Comments: This Laboratory Grown Diamond was created by Chemical Vapor Deposition (CVD) growth process. Type IIa



March 5, 2025
IGI Report No LG687562711
ROUND BRILLIANT

8.19 - 8.28 X 4.89 MM

2.00 CARATS
F

Color Grade
VS 1
IDEAL

Clarity Grade
VS 1

Depth
59.6%

Table
59%

Girdle
Medium (Faceted)

Culet
Pointed

Polish
EXCELLENT

Symmetry
EXCELLENT

Fluorescence
NONE

Inscription(s)
IGI LG687562711

Comments:
This Laboratory Grown Diamond was created by Chemical Vapor Deposition (CVD) growth process.
Type IIa