

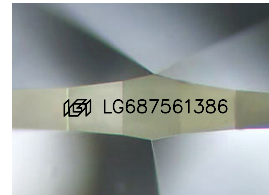
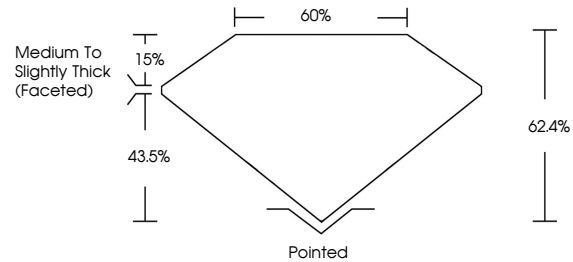


**INTERNATIONAL  
GEMOLOGICAL  
INSTITUTE**

**ELECTRONIC COPY**

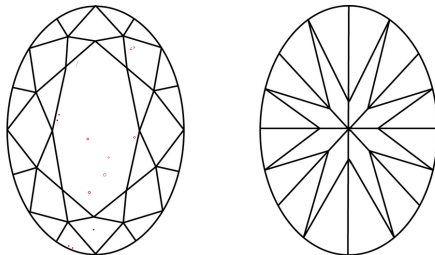
LG687561386  
Report verification at [igi.org](https://igi.org)

## PROPORTIONS



Sample Image Used

## CLARITY CHARACTERISTICS



## KEY TO SYMBOLS

Red symbols indicate internal characteristics.  
Green symbols indicate external characteristics.

## COLOR

D E F G H I J Faint Very Light Light

## CLARITY

IF WS<sup>1-2</sup> VS<sup>1-2</sup> SI<sup>1-2</sup> I<sup>1-3</sup>

Internally Flawless	Very Very Slightly Included	Very Slightly Included	Slightly Included	Included
------------------------	--------------------------------	---------------------------	----------------------	----------



© IGI 2020, International Gemological Institute

FD - 10 20

**www.igi.org**



THIS DOCUMENT WAS PRODUCED WITH THE FOLLOWING SECURITY MEASURES: SPECIAL DOCUMENT PAPER, INK SCREENS, WATERMARK, BACKGROUND DESIGNS, HOLOGRAM AND OTHER SECURITY FEATURES NOT LISTED AND DO EXCEED DOCUMENT SECURITY INDUSTRY GUIDELINES.

LABORATORY GROWN DIAMOND REPORT



March 20, 2025

IGI Report Number **LG687561386**

Description	LABORATORY GROWN DIAMOND
-------------	--------------------------

Shape and Cutting Style **OVAL BRILLIANT**

Measurements 15.78 X 10.68 X 6.66 MM

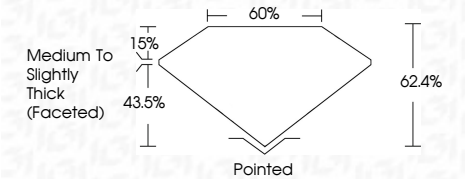
## GRADING RESULTS

Carat Weight **7.03 CARATS**

Color Grade **E**

Clarity Grade VS 2

Cut Grade **EXCELLENT**



### ADDITIONAL GRADING INFORMATION

Polish **EXCELLENT**Symmetry **EXCELLENT**Fluorescence **NONE**Inscription(s)  LG687561386

Comments: This Laboratory Grown Diamond was created by Chemical Vapor Deposition (CVD) growth process.  
Type IIa



IGI

March 20, 2025	IGI Report No LG697561386		7.03 CARATS	
OVAL Brilliant		15.78 X 10.68 X 6.66 MM	Vs 2	
Carat Weight	Color Grade	Clarity Grade	EXCELLENT	62.4%
Depth	Cut Grade	Table	Medium to Slightly Thick (Faceted)	60%
Girdle	Symmetry	Fluorescence	Polished	EXCELLENT
Inscriptions(s)	None	None	EXCELLENT	None
Comments:		IGI LG697561386		
This Laboratory Grown Diamond was created by Chemical Vapor Deposition (CVD) growth process.		Type IId		