



**ELECTRONIC COPY**

LG687561366  
Report verification at igi.org



March 22, 2025  
IGI Report Number **LG687561366**  
Description **LABORATORY GROWN DIAMOND**  
Shape and Cutting Style **SQUARE CUSHION MODIFIED BRILLIANT**  
Measurements **6.31 X 6.22 X 4.25 MM**  
**GRADING RESULTS**  
Carat Weight **1.65 CARAT**  
Color Grade **FANCY GREYISH YELLOW**  
Clarity Grade **VS 1**

March 22, 2025  
IGI Report Number **LG687561366**  
Description **LABORATORY GROWN DIAMOND**  
Shape and Cutting Style **SQUARE CUSHION MODIFIED BRILLIANT**  
Measurements **6.31 X 6.22 X 4.25 MM**

**GRADING RESULTS**

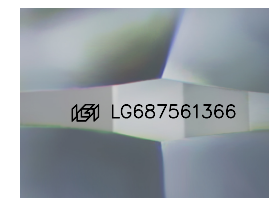
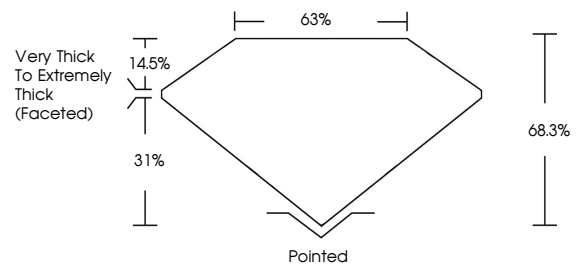
Carat Weight **1.65 CARAT**  
Color Grade **FANCY GREYISH YELLOW**  
Clarity Grade **VS 1**

**ADDITIONAL GRADING INFORMATION**

Polish **EXCELLENT**  
Symmetry **EXCELLENT**  
Fluorescence **NONE**  
Inscription(s) **IGI LG687561366**

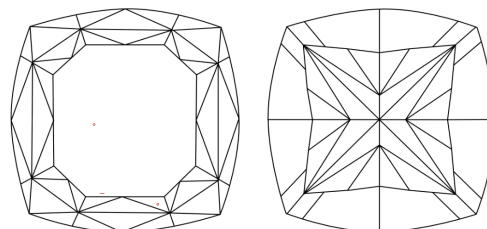
Comments: This Laboratory Grown Diamond was created by Chemical Vapor Deposition (CVD) growth process.

**PROPORTIONS**



Sample Image Used

**CLARITY CHARACTERISTICS**



**KEY TO SYMBOLS**

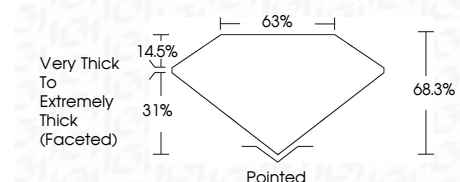
Red symbols indicate internal characteristics.  
Green symbols indicate external characteristics.

**COLOR**

D E F G H I J Faint Very Light Light

**CLARITY**

IF	VS <sup>1-2</sup>	VS <sup>1-2</sup>	SI <sup>1-2</sup>	I <sup>1-3</sup>
Internally Flawless	Very Very Slightly Included	Very Slightly Included	Slightly Included	Included



**ADDITIONAL GRADING INFORMATION**

Polish **EXCELLENT**  
Symmetry **EXCELLENT**  
Fluorescence **NONE**  
Inscription(s) **IGI LG687561366**  
Comments: This Laboratory Grown Diamond was created by Chemical Vapor Deposition (CVD) growth process.



March 22, 2025  
IGI Report No LG687561366  
**SQUARE CUSHION MODIFIED BRILLIANT**  
6.31 X 6.22 X 4.25 MM  
1.65 CARAT  
FANCY GREYISH YELLOW  
VS 1  
68.3%  
31%  
14.5%  
Very Thick to Extremely Thick (Faceted)  
Pointed  
EXCELLENT  
EXCELLENT  
NONE  
IGI LG687561366  
Comments: This Laboratory Grown Diamond was created by Chemical Vapor Deposition (CVD) growth process.