

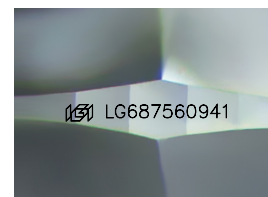
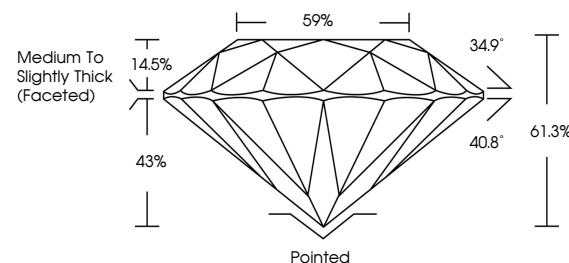


ELECTRONIC COPY

LABORATORY GROWN DIAMOND REPORT

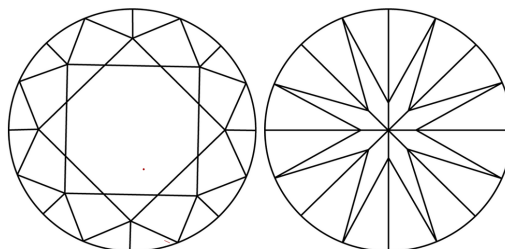
LG687560941
Report verification at igi.org

PROPORTIONS



Sample Image Used

CLARITY CHARACTERISTICS



KEY TO SYMBOLS

Red symbols indicate internal characteristics.
Green symbols indicate external characteristics.

COLOR

D E F G H I J Faint Very Light Light

CLARITY

IF WS¹⁻² VS¹⁻² S¹⁻² |¹⁻³

Internally Flawless	Very Very Slightly Included	Very Slightly Included	Slightly Included	Included
------------------------	--------------------------------	---------------------------	----------------------	----------



© IGI 2020, International Gemological Institute

FD - 10 20

www.igi.org

LABORATORY GROWN DIAMOND REPORT



March 5, 2025

IGI Report Number **LG687560941**Description **LABORATORY GROWN DIAMOND**Shape and Cutting Style **ROUND BRILLIANT**

Measurements 7.36 - 7.39 X 4.52 MM

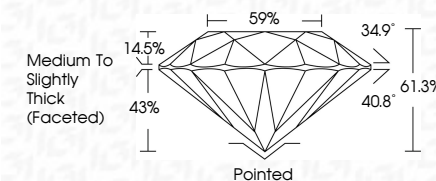
GRADING RESULTS

Carat Weight 1.52 CARAT

Color Grade

Clarity Grade WS 2

Cut Grade **IDEAL**



ADDITIONAL GRADING INFORMATION

Polish EXCELLENT

Symmetry **EXCELLENT**Fluorescence **NONE**Inscription(s) LG687560941

Comments: As Grown - No indication of post-growth treatment.

This Laboratory Grown Diamond was created by High Pressure High Temperature (HPHT) growth process.

Type II



March 5, 2025	G Report No LG67560941
VG BRIGHT BRILLIANT	
MM 4.52 X 3.97 X 2.34 - 7.97	1.52 CARAT
Color Weight	E
Grade Color	VVS 2
Clarity Grade	IDEAL
Cut Grade	61.3%
Depth	59%
Table	Medium To Slightly Thick (Faceted)
Girdle	
Culet	Poined
Polish	EXCELLENT
Symmetry	EXCELLENT
Fluorescence	NONE
Inscriptions(s)	I69 LG67560941
Comments:	
No Growth - No indication of post-growth treatment.	
This Laboratory Grown Diamond was created by High Pressure Growth temperature (HPHT) growth process.	
Type II	