



ELECTRONIC COPY

LG687559392
Report verification at igi.org



March 8, 2025
IGI Report Number **LG687559392**
Description **LABORATORY GROWN DIAMOND**
Shape and Cutting Style **ROUND CORNERED
RECTANGULAR MODIFIED
BRILLIANT**

Measurements **8.46 X 5.40 X 3.41 MM**

GRADING RESULTS

Carat Weight **1.51 CARAT**
Color Grade **H**
Clarity Grade **VVS 2**

March 8, 2025
IGI Report Number **LG687559392**
Description **LABORATORY GROWN DIAMOND**
Shape and Cutting Style **ROUND CORNERED
RECTANGULAR MODIFIED
BRILLIANT**
Measurements **8.46 X 5.40 X 3.41 MM**

GRADING RESULTS

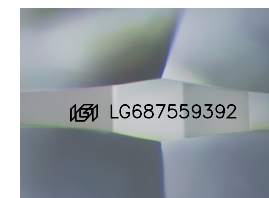
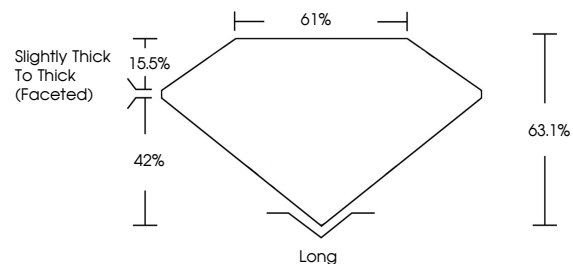
Carat Weight **1.51 CARAT**
Color Grade **H**
Clarity Grade **VVS 2**

ADDITIONAL GRADING INFORMATION

Polish **EXCELLENT**
Symmetry **EXCELLENT**
Fluorescence **NONE**
Inscription(s) **IGI LG687559392**

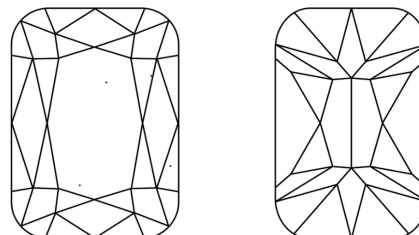
Comments: This Laboratory Grown Diamond was created by Chemical Vapor Deposition (CVD) growth process. Type IIa

PROPORTIONS



Sample Image Used

CLARITY CHARACTERISTICS



KEY TO SYMBOLS

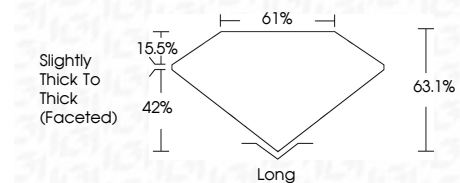
Red symbols indicate internal characteristics.
Green symbols indicate external characteristics.

COLOR

D E F G H I J Faint Very Light Light

CLARITY

IF	VS ¹⁻²	VS ¹⁻²	SI ¹⁻²	I ¹⁻³
Internally Flawless	Very Very Slightly Included	Very Slightly Included	Slightly Included	Included



ADDITIONAL GRADING INFORMATION

Polish **EXCELLENT**
Symmetry **EXCELLENT**
Fluorescence **NONE**
Inscription(s) **IGI LG687559392**
Comments: This Laboratory Grown Diamond was created by Chemical Vapor Deposition (CVD) growth process. Type IIa



March 8, 2025
IGI Report No. LG687559392
**ROUND CORNERED RECT. MODIFIED
BRILLIANT**
8.46 X 5.40 X 3.41 MM
Carat Weight 1.51 CARAT
Color Grade H
Clarity Grade VVS 2
Depth 63.1%
Table 15.5%
Girdle Slightly Thick To Thick (Faceted)
Culet Long
Polish EXCELLENT
Symmetry EXCELLENT
Fluorescence NONE
Inscription(s) IGI LG687559392

Comments: This Laboratory Grown Diamond was created by Chemical Vapor Deposition (CVD) growth process. Type IIa