



**INTERNATIONAL
GEMOLOGICAL
INSTITUTE**

ELECTRONIC COPY

LG687553982

LABORATORY GROWN DIAMOND REPORT

March 12, 2025
 IGI Report Number **LG687553982**
 Description **LABORATORY GROWN DIAMOND**
 Shape and Cutting Style **EMERALD CUT**
 Measurements **9.83 X 7.06 X 4.89 MM**

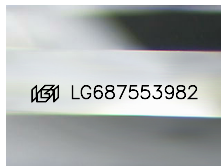
GRADING RESULTS

Carat Weight **3.30 CARATS**
 Color Grade **F**
 Clarity Grade **SI 1**
 Cut Grade **VERY GOOD**

ADDITIONAL GRADING INFORMATION

Polish **EXCELLENT**
 Symmetry **EXCELLENT**
 Fluorescence **NONE**
 Inscription(s) **IGI LG687553982**

Comments: Pre-existing laser inscription on girdle. This Laboratory Grown Diamond was created by Chemical Vapor Deposition (CVD) growth process. Indications of post-growth treatment.



Sample Image Used



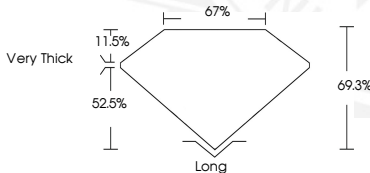
March 12, 2025
IGI Report Number LG687553982
EMERALD CUT
LABORATORY GROWN DIAMOND
9.83 X 7.06 X 4.89 MM
 Carat Weight **3.30 CARATS**
 Color Grade **F**
 Clarity Grade **SI 1**
 Cut Grade **VERY GOOD**
 Polish **EXCELLENT**
 Symmetry **EXCELLENT**
 Fluorescence **NONE**
 Inscription(s) **IGI LG687553982**

Comments: Pre-existing laser inscription on girdle. This Laboratory Grown Diamond was created by Chemical Vapor Deposition (CVD) growth process. Indications of post-growth treatment.



March 12, 2025
IGI Report Number LG687553982
EMERALD CUT
LABORATORY GROWN DIAMOND
9.83 X 7.06 X 4.89 MM
 Carat Weight **3.30 CARATS**
 Color Grade **F**
 Clarity Grade **SI 1**
 Cut Grade **VERY GOOD**
 Polish **EXCELLENT**
 Symmetry **EXCELLENT**
 Fluorescence **NONE**
 Inscription(s) **IGI LG687553982**

Comments: Pre-existing laser inscription on girdle. This Laboratory Grown Diamond was created by Chemical Vapor Deposition (CVD) growth process. Indications of post-growth treatment.



THIS DOCUMENT WAS PRODUCED WITH THE FOLLOWING SECURITY MEASURES: SPECIAL DOCUMENT PAPER, INK SCREENS, WATERMARK, BACKGROUND DESIGN, HOLOGRAM AND OTHER SECURITY FEATURES NOT LISTED AND DO EXCEED DOCUMENT SECURITY INDUSTRY GUIDELINES.

For terms & conditions and to verify this report, please visit www.igi.org