

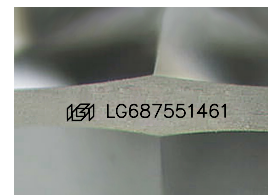
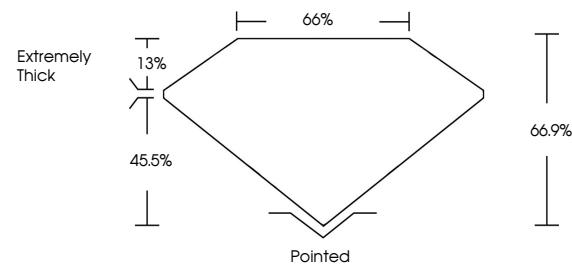


**ELECTRONIC COPY**

## LABORATORY GROWN DIAMOND REPORT

LG687551461  
Report verification at [igi.org](http://igi.org)

## PROPORTIONS



Sample Image Used

**COLOR**

D E F G H I J Faint Very Light Light

## CLARITY

IF	VVS <sup>1-2</sup>	VS <sup>1-2</sup>	SI <sup>1-2</sup>	I <sup>1-3</sup>
Internally Flawless	Very Very Slightly Included	Very Slightly Included	Slightly Included	Included

## LABORATORY GROWN DIAMOND REPORT



March 4, 2025

IGI Report Number **LG687551461**

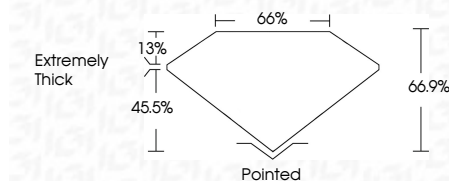
Description	LABORATORY GROWN DIAMOND
-------------	--------------------------

Shape and Cutting Style **DODECAHEDRAL STEP CUT**

Measurements 7.72 X 5.31 X 3.55 MM

## GRADING RESULTS

Carat Weight 1.07 CARAT

Color Grade **E**Clarity Grade WS 2

### ADDITIONAL GRADING INFORMATION

Polish EXCELLENT

Symmetry **EXCELLENT**Fluorescence **NONE**Inscription(s)  LG687551461

Comments: This Laboratory Grown Diamond was created by Chemical Vapor Deposition (CVD) growth process.  
Type IIa



**www.igi.org**

© IGI 2020, International Gemological Institute

FD - 10 20



THIS DOCUMENT WAS PRODUCED WITH THE FOLLOWING SECURITY MEASURES: SPECIAL DOCUMENT PAPER, INK SCREENS, WATERMARK, BACKGROUND DESIGNS, HOLOGRAM AND OTHER SECURITY FEATURES NOT LISTED AND DO EXCEED DOCUMENT SECURITY INDUSTRY GUIDELINES

[illegible]