



**ELECTRONIC COPY**

## LABORATORY GROWN DIAMOND REPORT

March 4, 2025	
IGI Report Number	LG687549102
Description	LABORATORY GROWN DIAMOND
Shape and Cutting Style	ROUND BRILLIANT
Measurements	8.30 - 8.35 X 5.06 MM

## GRADING RESULTS

Carat Weight	2.17 CARATS
Color Grade	G
Clarity Grade	VVS 2
Cut Grade	IDEAL

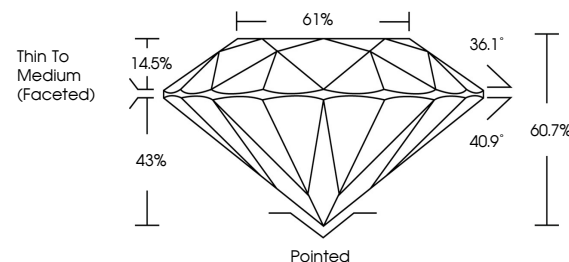
### ADDITIONAL GRADING INFORMATION

Polish	EXCELLENT
Symmetry	EXCELLENT
Fluorescence	NONE
Inscription(s)	151 LG687549102

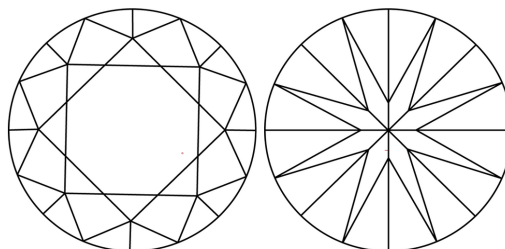
Comments: This Laboratory Grown Diamond was created by Chemical Vapor Deposition (CVD) growth process.  
Type IIa

LG687549102  
Report verification at [lgi.org](https://lgi.org)

## PROPORTIONS

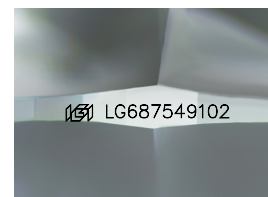


## CLARITY CHARACTERISTICS



### KEY TO SYMBOLS

Red symbols indicate internal characteristics.  
Green symbols indicate external characteristics.



Sample Image Used

## COLOR

D E F G H I J Faint Very Light Light

## CLARITY

IF WS<sup>1-2</sup> VS<sup>1-2</sup> SI<sup>1-2</sup> |<sup>1-3</sup>

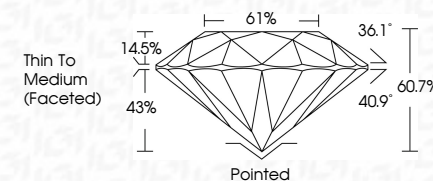
Internally Flawless	Very Very Slightly Included	Very Slightly Included	Slightly Included	Included
------------------------	--------------------------------	---------------------------	----------------------	----------



March 4, 2025	
IGI Report Number	LG687549102
Description	LABORATORY GROWN DIAMOND
Shape and Cutting Style	ROUND BRILLIANT
Measurements	8.30 - 8.35 X 5.06 MM

## GRADING RESULTS

Carat Weight	2.17 CARATS
Color Grade	G
Clarity Grade	VVS 2
Cut Grade	IDEAL



### ADDITIONAL GRADING INFORMATION

Polish	EXCELLENT
Symmetry	EXCELLENT
Fluorescence	NONE
Inscription(s)	 LG687549102
<p>Comments: This Laboratory Grown Diamond was created by Chemical Vapor Deposition (CVD) growth process.</p> <p>Type IIa</p>	



© IGI 2020, International Gemological Institute

FD - 10 20

**www.igi.org**



THIS DOCUMENT WAS PRODUCED WITH THE FOLLOWING SECURITY MEASURES: SPECIAL DOCUMENT PAPER, INK SCREENS, WATERMARK BACKGROUND DESIGNS, HOLOGRAM AND OTHER SECURITY FEATURES NOT LISTED AND DO EXCEED DOCUMENT SECURITY INDUSTRY GUIDELINES

	MARCH 4, 2028	GJ Report No.GS9756P102	
	RUND BRILLANT		
		3.37 - 8.35 X 5.05 MM	
Carat Weight			2.17 CARATS
Color Grade	VVS 2		
Clarity Grade	Dflty Grde	VVS 2	
Cut Grade	Ideal	IDeAL	
Depth	60.7%	60.7%	
Tabelle	61%		
Grde	Thin To Medium Foiceded		
Quiet	Poirted		
Balsh	EXCELLENT		
Symmetry	EXCELT		
Fluorescence	NONE		
Inscriptions(s)	(#) LSG6756P102		
Comments:			
	grown Diamond was created by Chemical Vapor Deposition CVD growth process.		
	Type IIA		