



ELECTRONIC COPY

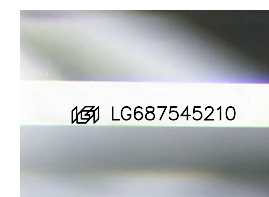
LG687545210
Report verification at igi.org



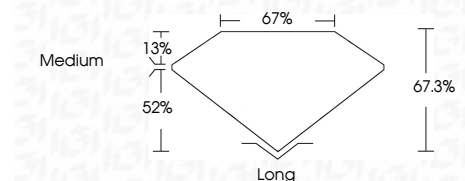
March 20, 2025
IGI Report Number **LG687545210**
Description **LABORATORY GROWN DIAMOND**
Shape and Cutting Style **EMERALD CUT**
Measurements **6.87 X 4.74 X 3.19 MM**

GRADING RESULTS

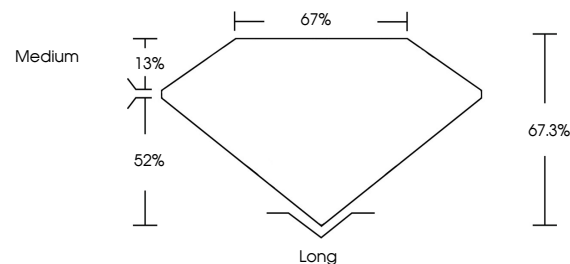
Carat Weight **1.00 CARAT**
Color Grade **G**
Clarity Grade **VS 2**



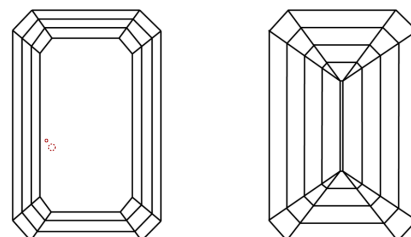
Sample Image Used



PROPORTIONS



CLARITY CHARACTERISTICS



KEY TO SYMBOLS

Red symbols indicate internal characteristics.
Green symbols indicate external characteristics.

COLOR

D E F G H I J Faint Very Light Light

CLARITY

IF	VS ¹⁻²	VS ¹⁻²	SI ¹⁻²	I ¹⁻³
Internally Flawless	Very Very Slightly Included	Very Slightly Included	Slightly Included	Included

ADDITIONAL GRADING INFORMATION

Polish **EXCELLENT**
Symmetry **EXCELLENT**
Fluorescence **NONE**
Inscription(s) **IGI LG687545210**
Comments: This Laboratory Grown Diamond was created by Chemical Vapor Deposition (CVD) growth process.
Type IIa



March 20, 2025
IGI Report No **LG687545210**
EMERALD CUT
6.87 X 4.74 X 3.19 MM
Carat Weight **1.00 CARAT**
Color Grade **G**
Clarity Grade **VS 2**
Depth **67.3%**
Table **67%**
Girdle **Medium**
Culet **Long**
Polish **EXCELLENT**
Symmetry **EXCELLENT**
Fluorescence **NONE**
Inscription(s) **IGI LG687545210**
Comments: This Laboratory Grown Diamond was created by Chemical Vapor Deposition (CVD) growth process.
Type IIa