



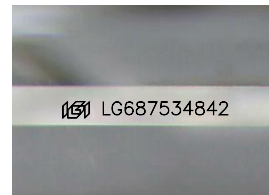
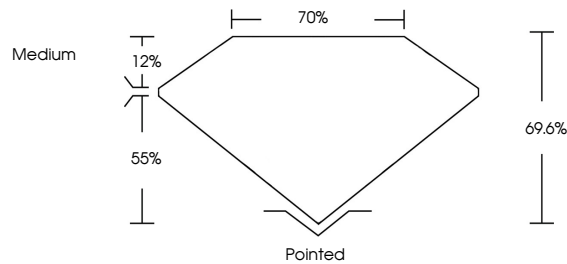
**INTERNATIONAL
GEMOLOGICAL
INSTITUTE**

ELECTRONIC COPY

LABORATORY GROWN DIAMOND REPORT

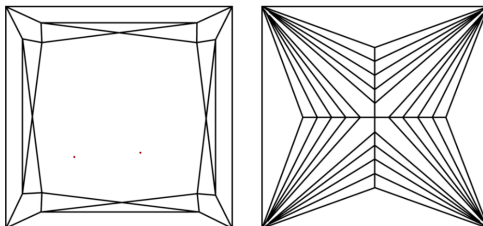
LG687534842
Report verification at [igi.org](https://www.igi.org)

PROPORTIONS



Sample Image Used

CLARITY CHARACTERISTICS



KEY TO SYMBOLS

Red symbols indicate internal characteristics.
Green symbols indicate external characteristics.

COLOR

D E F G H I J Faint Very Light Light

CLARITY

IF WS¹⁻² VS¹⁻² SI¹⁻² I¹⁻³

Internally Flawless	Very Very Slightly Included	Very Slightly Included	Slightly Included	Included
------------------------	--------------------------------	---------------------------	----------------------	----------



© IGI 2020, International Gemological Institute

FD - 10 20



THIS DOCUMENT WAS PRODUCED WITH THE FOLLOWING SECURITY MEASURES: SPECIAL DOCUMENT PAPER, INK SCREENS, WATERMARK BACKGROUND DESIGNS, HOLOGRAM AND OTHER SECURITY FEATURES NOT LISTED AND DO EXCEED DOCUMENT SECURITY INDUSTRY GUIDELINES.

LABORATORY GROWN DIAMOND REPORT



March 6, 2025

IGI Report Number **LG687534842**

Description	LABORATORY GROWN DIAMOND
-------------	--------------------------

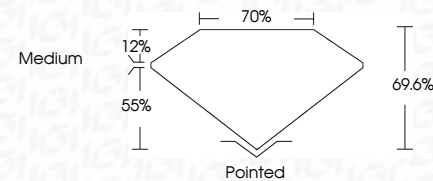
Shape and Cutting Style **PRINCESS CUT**

Measurements 10.21 X 10.04 X 6.99 MM

GRADING RESULTS

Carat Weight **6.18 CARATS**

Color Grade	E
-------------	---

Clarity Grade **VVS 2**

ADDITIONAL GRADING INFORMATION

Polish **EXCELLENCE**Symmetry **EXCELLENCE**Fluorescence NONIInscription(s)  LG68753484

Comments: This Laboratory Grown Diamond was created by Chemical Vapor Deposition (CVD) growth process.
Type IIa



IG

March 6, 2025	6.18 CARATS	Polished
IGI Report No LG567534642	VVS 2	EXCELLENT
PRINCESS CUT	69.6%	EXCELLENT
	70%	NONE
	Medium	16# LG567534642
10.21 X 10.04 X 6.99 MM		
Carat Weight		
Color Grade		
Clarity Grade		
Depth		
Table		
Grade		
Quiet		
Polish		
Symmetry		
Fluorescence		
Inscription(s)		
Comments:		
This is a Chemically Grown Diamond was created by Chemical Vapor Deposition (CVD) growth process.		
Type Ila		

Comments:
This Laboratory Grown Diamond was created by Chemical Vapor Deposition (CVD) growth process.