

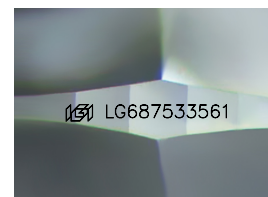
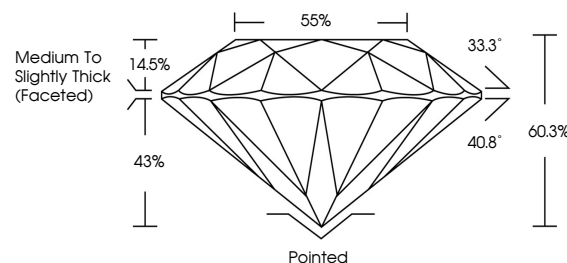


ELECTRONIC COPY

LABORATORY GROWN DIAMOND REPORT

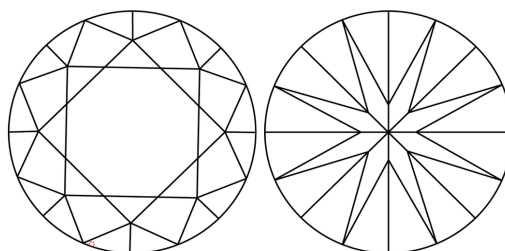
LG687533561
Report verification at iqi.org

PROPORTIONS



Sample Image Used

CLARITY CHARACTERISTICS



KEY TO SYMBOLS

Red symbols indicate internal characteristics.
Green symbols indicate external characteristics.

COLOR

D E F G H I J Faint Very Light Light

CLARITY

IF WS¹⁻² VS¹⁻² SI¹⁻² |¹⁻³

Internally Flawless	Very Very Slightly Included	Very Slightly Included	Slightly Included	Included
------------------------	--------------------------------	---------------------------	----------------------	----------

LABORATORY GROWN DIAMOND REPORT



March 7, 2025

IGI Report Number **LG687533561**Description **LABORATORY GROWN DIAMOND**Shape and Cutting Style **ROUND BRILLIANT**

Measurements 6.63 - 6.68 X 4.02 MM

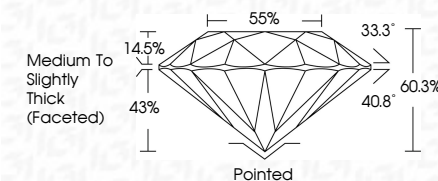
GRADING RESULTS

Carat Weight 1.07 CARAT

Color Grade E

Clarity Grade **VVS 2**

Cut Grade **IDEAL**



ADDITIONAL GRADING INFORMATION

Polish **EXCELLENT**Symmetry **EXCELLENT**Fluorescence **NONE**Inscription(s) LG687533561

Comments: As Grown - No indication of post-growth treatment.

This Laboratory Grown Diamond was created by High Pressure High Temperature (HPHT) growth process.
Type II



© IGI 2020, International Gemological Institute

FD - 10 20



THIS DOCUMENT WAS PRODUCED WITH THE FOLLOWING SECURITY MEASURES: SPECIAL DOCUMENT PAPER, INK SCREENS, WATERMARK, BACKGROUND DESIGNS, HOLOGRAM AND OTHER SECURITY FEATURES NOT LISTED AND DO EXCEED DOCUMENT SECURITY INDUSTRY GUIDELINES

www.igi.org

March 7, 2025	GI Report No LG497353561
ROUND BRILLIANT	
4.63 - 4.68 X 4.02 MM	1.07 CARAT
Color Weight	E
Color Grade	VVS 2
Clarity Grade	IDEXAL
Cut Grade	60.3%
Depth	55%
Table	Medium to Slightly Thick (Faceted)
Girdle	
Culet	Polished
Polish	EXCELLENT
Symmetry	EXCELLENT
Fluorescence	NONE
Inscriptions(s)	499 LG497353561
Comments: As Grown - No indication of post-growth treatment. This Laboratory Grown Diamond was created by High Pressure High temperature (HPHT) growth process.	
Type II	