



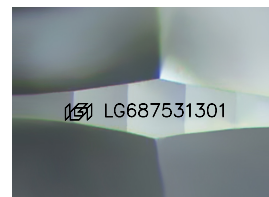
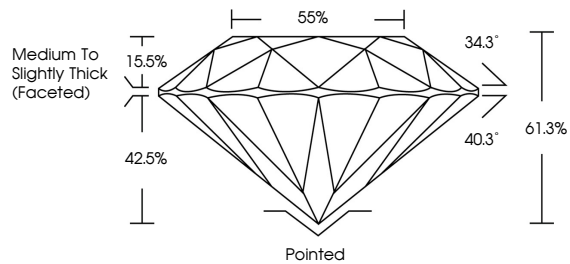
**INTERNATIONAL
GEMOLOGICAL
INSTITUTE**

ELECTRONIC COPY

LABORATORY GROWN DIAMOND REPORT

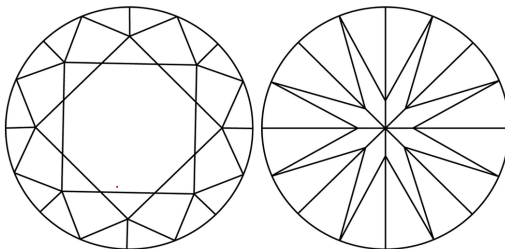
LG687531301
Report verification at igi.org

PROPORTIONS



Sample Image Used

CLARITY CHARACTERISTICS



KEY TO SYMBOLS

Red symbols indicate internal characteristics.
Green symbols indicate external characteristics.

COLOR

D E F G H I J Faint Very Light Light

CLARITY

IF WS¹⁻² VS¹⁻² SI¹⁻² |¹⁻³

Internally Flawless	Very Very Slightly Included	Very Slightly Included	Slightly Included	Included
------------------------	--------------------------------	---------------------------	----------------------	----------



March 31, 2025

IGI Report Number **LG687531301**

Description	LABORATORY GROWN DIAMOND
-------------	--------------------------

Shape and Cutting Style **ROUND BRILLIANT**

Measurements 7.18 - 7.21 X 4.41 MM

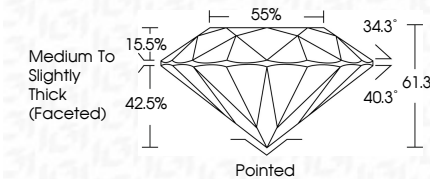
GRADING RESULTS

Carat Weight **1.40 CARAT**

Color Grade	F
-------------	---

Clarity Grade **VVS 2**

Cut Grade **IDEAL**



ADDITIONAL GRADING INFORMATION

Polish **EXCELLENCE**Symmetry **EXCELLENCE**

Fluorescence NONI

Inscription(s)  LG68753130

Comments: This Laboratory Grown Diamond was created by Chemical Vapor Deposition (CVD) growth process.
Type IIa



IG



© IGI 2020, International Gemological Institute

FD - 10 20

www.igi.org

THIS DOCUMENT WAS PRODUCED WITH THE FOLLOWING SECURITY MEASURES: SPECIAL DOCUMENT PAPER, INK SCREENS, WATERMARK, BACKGROUND DESIGNS, HOLOGRAM AND OTHER SECURITY FEATURES NOT LISTED AND DO EXCEED DOCUMENT SECURITY INDUSTRY GUIDELINES

March 31, 2025	IGI Report No. L5667531301	ROUND BRILLIANT	7.18 - 7.21 x 4.41 MM	1.40 CARAT	F	VVS 2	IDEAL	61.5%	55%	Medium to Slightly Thick (faceted)	Portined	EXCELLENT	NONE	681 L5667531301	Comments: This is a very Crown Diamond was checked by Chemical Vapor Deposition (CVD) growth process. Type Iia
				Color: Weight	Color: Grade	Clarity: Grade	Cut: Grade	Depth	Table	Girdle	Fluorescence	Inscriptions(s)			